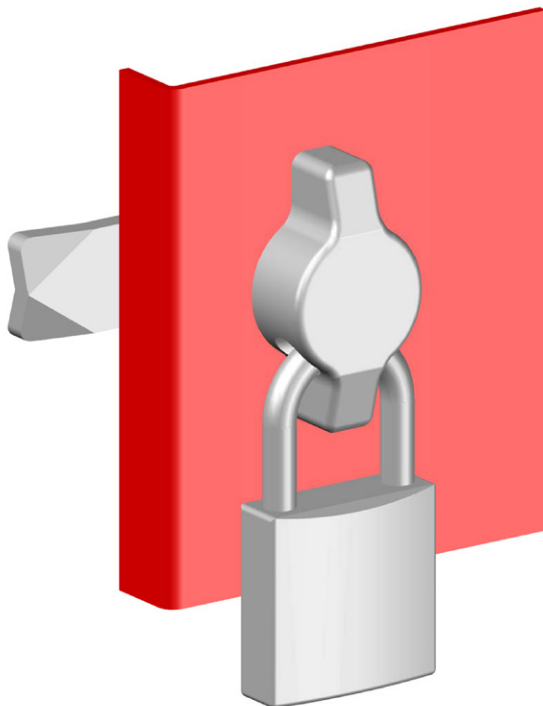
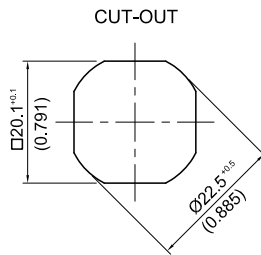
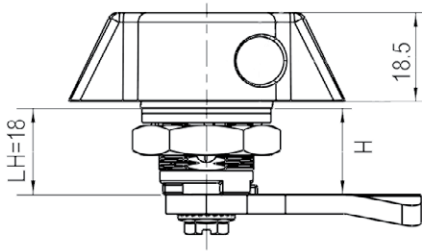




PADLOCKABLE WING KNOB



FEATURES:

- Reduced installation time
- Fully assembled
- Suit up to 8mm pad lock
- Available in marine grade Stainless Steel 316

DIMENSIONS:

Housing Length = 18mm

MATERIAL & FINISH:

Housing Zinc die, Chrome plated
 Insert Zinc die, Black EDP
 Cam Mild steel, Zinc plated

Housing Stainless Steel 316
 Insert Stainless Steel 316
 Cam Stainless Steel 316

CAM DIMENSIONS:

Standard cam included H=26mm
 Other variations available on request
 Refer to [page 1-16](#) when ordering



Convert to compression style with [PI5124 \(page 2-14\)](#)

MATERIAL/FINISH	PART NUMBER
Zinc die, Black EDP	ALWU06A-BLK
Stainless Steel 316	SEL-200-9375