

SWITCH UP, MODULAR SWING HANDLE

Eselon+® Series

FSDT™ Range

Features

- Easily Switch Up between pad-lockable, keyed barrel or half-euro inserts (half-euro cylinder sold separately) *non-locking w/o insert
- Polyamide: IP42 rated - indoor applications only
- Zinc, black powder coat: IP66 rated - outdoor/full exposure applications
- Zinc, chrome plated: IP66 rated - outdoor/full exposure applications
- 90° handle rotation feedback with “click”
- Short cam shaft design
- Modularity & symmetry - F Cutout compatibility: Perfect for biaxial symmetrical door frames using Selectlok’s patented F Cutout and/or F Cutout Adapter Plate - *part of the F-Series™ Symmetrical Door Technology (FSDT™) range*. - Enabling 180° handle rotation for compatibility with both LH and RH symmetrical / modular door frame applications
- Vandal resistant, flush design
- Reduces inventory requirements

Remarks

- Single and three-point cams: Available in various H= dimensions (*note: three-point T-CAM’s require a 4mm raised stud to ensure rod clearance*)
- Adapting Pad-lockable Handles: Some Millennium® and Eselon® series pad-lockable swing handles feature a single-bolt lower mount design. These require a **P1117 Padlock Accessory Plate** when converting to either S or F Cutout profiles featuring a 25 x 50 (mm) lower cutout (*P1117 available upon request; subject to MOQ and lead times.*) **Refer to Datasheet:*



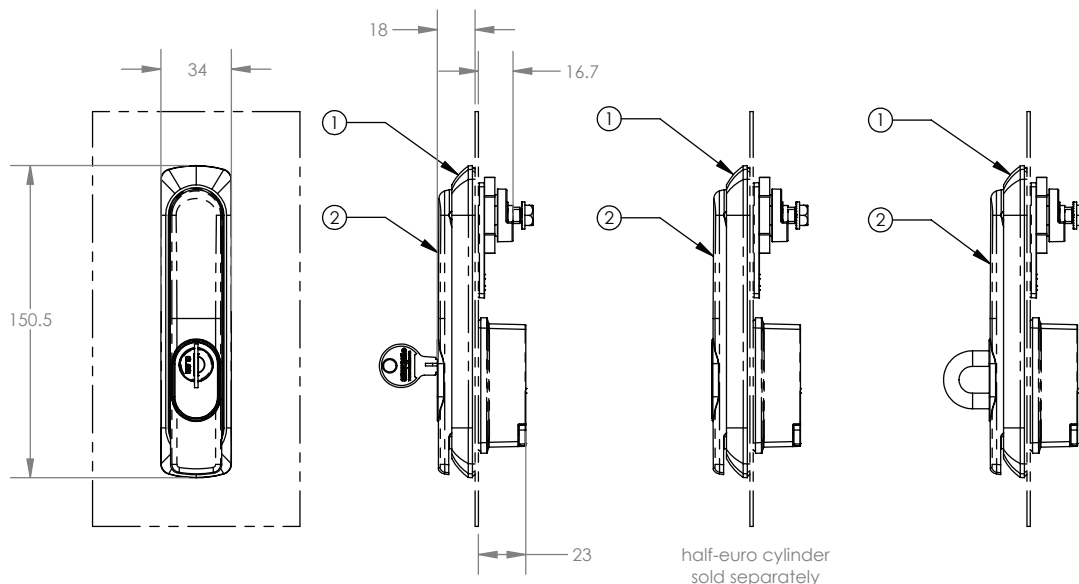
Part Number	Description	Material & Finish	IP Rating	Remarks
1107S-EV2-SPBB0	Modular Swing Handle	Polyamide, Black	IP42	Polyamide, Swing Handle (Only)
1107S-EV2-SZBB0	Modular Swing Handle	Zinc, Black PC	IP66	Zinc, Black PC, Swing Handle (Only)
1107S-EV2-SZCC0	Modular Swing Handle	Zinc, Chrome PLT	IP66	Zinc, Chrome PLT, Swing Handle (Only)
1107S-FCUTOUT-01	F Cutout Adapter Plate	Zinc, Zinc PLT	IP42 / IP66	For adapting S Cutout swing handles to fit F Cutout door profiles <i>(Sold Separately)</i>
1107S-FCUTOUT-02	F Cutout Adapter Plate	Polyamide, Black	IP42 / IP66	For adapting S Cutout swing handles to fit F Cutout door profiles <i>(Sold Separately)</i>
1107S-EV2-SS-INPAD	Insert	Stainless Steel 316	IP42 / IP66	Pad-Lockable, SS-316 Insert (Only) for Eselon+ Series, Switch Up Swing Handle
1107S-EV2-ZB-IN01	Insert	Zinc, Black PC	IP42 / IP66	CL001 Keyed Insert (Only) for Eselon+ Series, Switch Up
1107S-EV2-ZB-IN02	Insert	Zinc, Black PC	IP42 / IP66	92268 Keyed Insert (Only) for Eselon+ Series, Switch Up
1107S-EV2-ZB-IN03	Insert	Zinc, Black PC	IP42 / IP66	CL604 Keyed Insert (Only) for Eselon+ Series, Switch Up
1107S-EV2-ZB-IN07	Insert	Zinc, Black PC	IP42 / IP66	CL003 Keyed Insert (Only) for Eselon+ Series, Switch Up
1107S-EV2-ZB-INU3	Insert	Zinc, Black PC	IP42 / IP66	Half-Euro Profile Insert (Only) for Eselon+ Series, Switch Up
1107S-EV2-ZC-IN01	Insert	Zinc, Chrome PLT	IP42 / IP66	CL001 Keyed Insert (Only) for Eselon+ Series, Switch Up
1107S-EV2-ZC-IN02	Insert	Zinc, Chrome PLT	IP42 / IP66	92268 Keyed Insert (Only) for Eselon+ Series, Switch Up
1107S-EV2-ZC-IN03	Insert	Zinc, Chrome PLT	IP42 / IP66	CL604 Keyed Insert (Only) for Eselon+ Series, Switch Up
1107S-EV2-ZC-IN07	Insert	Zinc, Chrome PLT	IP42 / IP66	CL003 Keyed Insert (Only) for Eselon+ Series, Switch Up
1107S-EV2-ZC-INU3	Insert	Zinc, Chrome PLT	IP42 / IP66	Half-Euro Profile Insert (Only) for Eselon+ Series, Switch Up

SWITCH UP, MODULAR SWING HANDLE

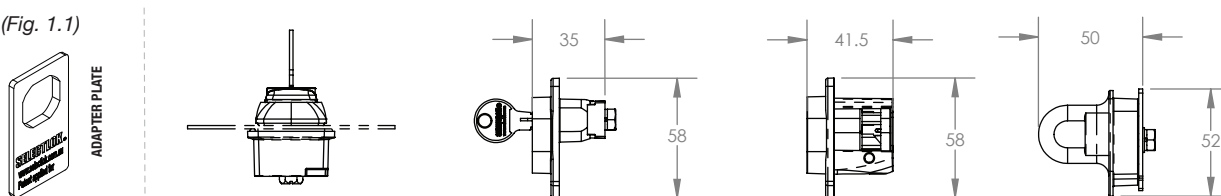
Eselon+® Series

FSDT™ Range

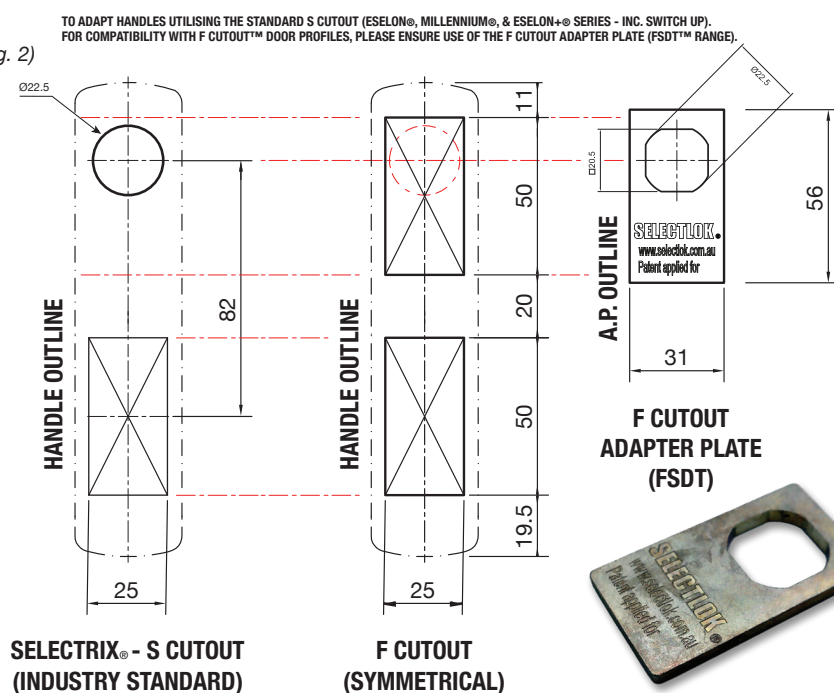
(Fig. 1)



(Fig. 1.1)



(Fig. 2)



(Fig. 3)

SWITCH UP, MODULAR SWING HANDLE

Eselon+® Series

FSDT™ Range

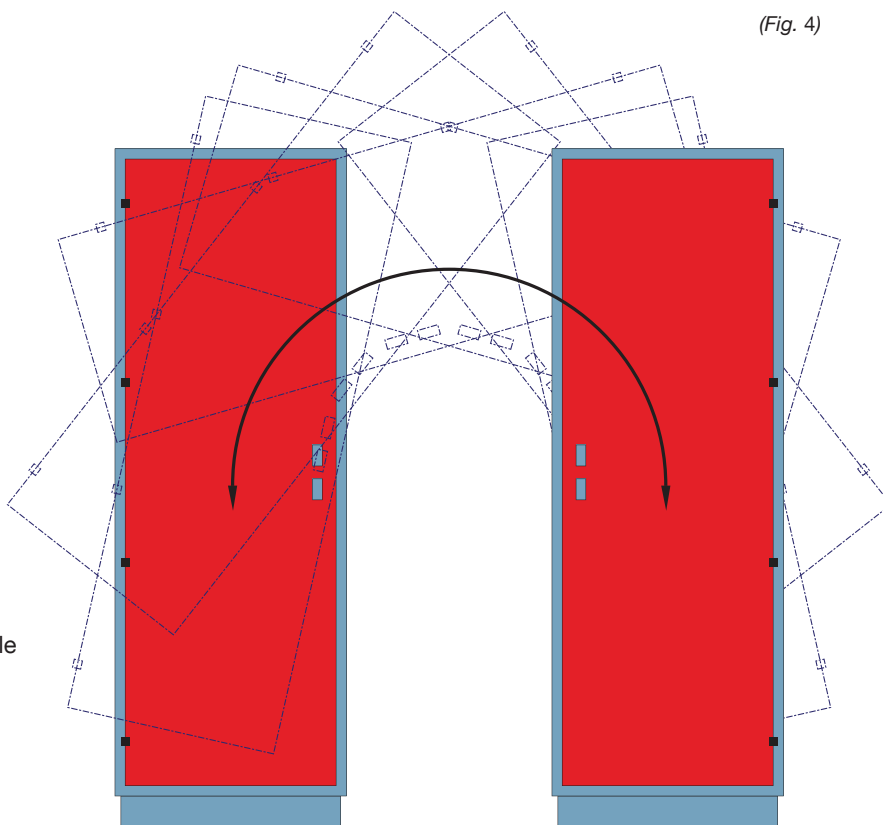
MODULAR SYMMETRY DOOR FRAME DESIGNS.

Biaxial symmetry at the frame is essential to rotating the door around its centre point.

Remarks



For best results: We recommend pairing our PI5346-MB-6-2-S (FSDT™) Corner Hinges with handles fitted using either the F Cutout Adapter Plate or a dedicated F-Series™ handle profile handle when designing biaxial symmetrical door frames.



(Fig. 4)

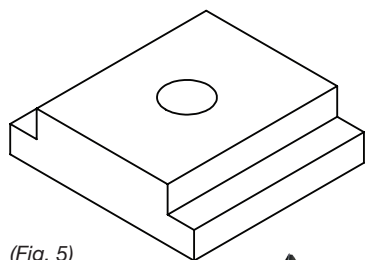
ACCESSORY PADLOCK PLATE

Padlockable Handle Adapter Plate

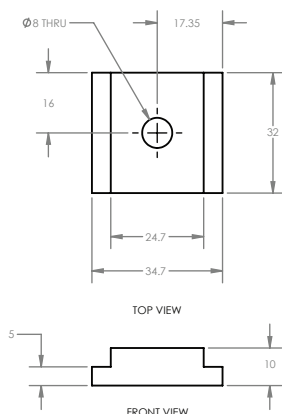
Part No. P1117 (Compatible with Fig. 6 - Version "S-01")

S CUTOUT | STD. PROFILE VARIATIONS

Compatible with:
ESELON®, MILLENNIUM® and ESELON+® SERIES
SWING HANDLES



(Fig. 5)



(Fig. 6)

