

SWITCH UP, MODULAR SWING HANDLE

Evolution Series

FSDT Range

Features

- Easily Switch Up between pad-lockable, keyed barrel or half-euro inserts (half-euro cylinder sold separately) *non-locking w/o insert
- Polyamide: IP42 rated - indoor applications only
- Zinc, black powder coat: IP66 rated - outdoor/full exposure applications
- Zinc, chrome plated: IP66 rated - outdoor/full exposure applications
- 90° handle rotation feedback with “click”
- Short cam shaft design
- Modularity & symmetry - F Cutout compatibility: Perfect for biaxial symmetrical door frames using Selectlok’s patented F Cutout and/or F Cutout Adapter Plate (*part of the F-Series Symmetrical Door Technology (FSDT) range.*) Enabling 180° handle rotation for compatibility with both LH and RH symmetrical / modular door frame applications
- Vandal resistant, flush design
- Reduces inventory requirements

Remarks

- Single and three-point cams: Available in various H= dimensions (*note: three-point T-CAM's require a 4mm raised stud to ensure rod clearance*)
- Adapting Pad-lockable Handles: Some Millennium and Eselon series pad-lockable swing handles feature a single-bolt lower mount design. These require a P1117 Padlock Accessory Plate when converting to either S or F Cutout profiles featuring a 25 x 50 (mm) lower cutout (P1117 available upon request; subject to MOQ and lead times.) *Refer to Datasheet: Page 3 - Fig.5 and Fig. 6 (Version S-01)



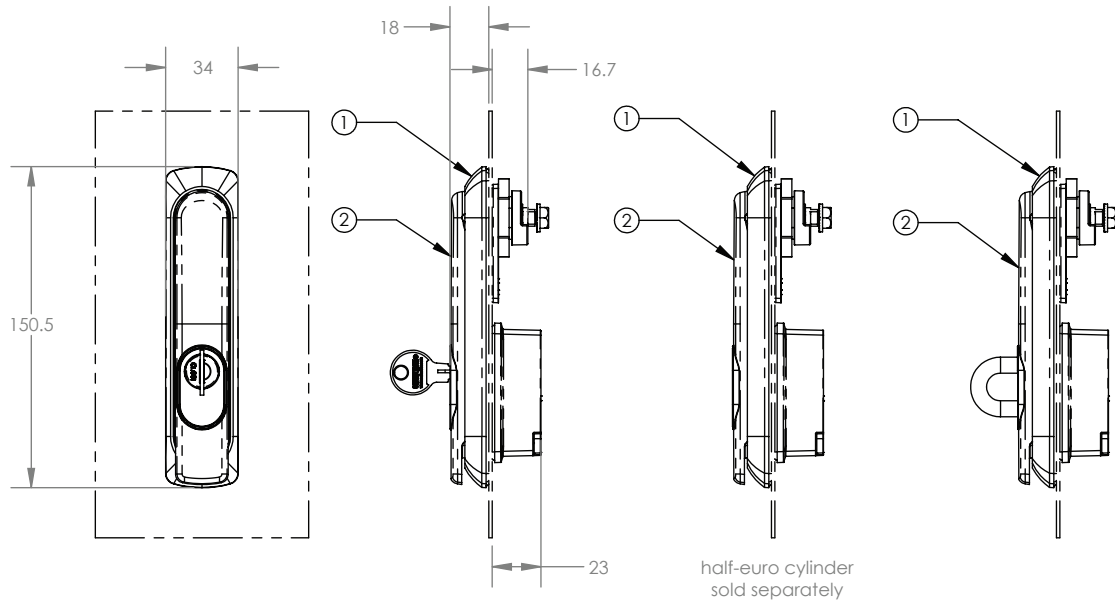
Part Number	Description	Material & Finish	IP Rating	Remarks
1107S-EV2-SPBB0	Modular Swing Handle	Polyamide, Black	IP42	Polyamide, Swing Handle (Only)
1107S-EV2-SZBB0	Modular Swing Handle	Zinc, Black PC	IP66	Zinc, Black PC, Swing Handle (Only)
1107S-EV2-SZCC0	Modular Swing Handle	Zinc, Chrome PLT	IP66	Zinc, Chrome PLT, Swing Handle (Only)
1107S-FCUTOUT-01	F Cutout Adapter Plate	Zinc, Zinc PLT	IP42 / IP66	For adapting S Cutout swing handles to fit F Cutout door profiles (<i>Sold Separately</i>)
1107S-FCUTOUT-02	F Cutout Adapter Plate	Polyamide, Black	IP42 / IP66	For adapting S Cutout swing handles to fit F Cutout door profiles (<i>Sold Separately</i>)
1107S-EV2-SS-INPAD	Insert	Stainless Steel 316	IP42 / IP66	Pad-Lockable, SS-316 Insert (Only) for Evolution Series, Switch Up Swing Handle
1107S-EV2-ZB-IN01	Insert	Zinc, Black PC	IP42 / IP66	CL001 Keyed Insert (Only) for Evolution Series, Switch Up
1107S-EV2-ZB-IN02	Insert	Zinc, Black PC	IP42 / IP66	92268 Keyed Insert (Only) for Evolution Series, Switch Up
1107S-EV2-ZB-IN03	Insert	Zinc, Black PC	IP42 / IP66	CL604 Keyed Insert (Only) for Evolution Series, Switch Up
1107S-EV2-ZB-IN07	Insert	Zinc, Black PC	IP42 / IP66	CL003 Keyed Insert (Only) for Evolution Series, Switch Up
1107S-EV2-ZB-INU3	Insert	Zinc, Black PC	IP42 / IP66	Half-Euro Profile Insert (Only) for Evolution Series, Switch Up
1107S-EV2-ZC-IN01	Insert	Zinc, Chrome PLT	IP42 / IP66	CL001 Keyed Insert (Only) for Evolution Series, Switch Up
1107S-EV2-ZC-IN02	Insert	Zinc, Chrome PLT	IP42 / IP66	92268 Keyed Insert (Only) for Evolution Series, Switch Up
1107S-EV2-ZC-IN03	Insert	Zinc, Chrome PLT	IP42 / IP66	CL604 Keyed Insert (Only) for Evolution Series, Switch Up
1107S-EV2-ZC-IN07	Insert	Zinc, Chrome PLT	IP42 / IP66	CL003 Keyed Insert (Only) for Evolution Series, Switch Up
1107S-EV2-ZC-INU3	Insert	Zinc, Chrome PLT	IP42 / IP66	Half-Euro Profile Insert (Only) for Evolution Series, Switch Up

SWITCH UP, MODULAR SWING HANDLE

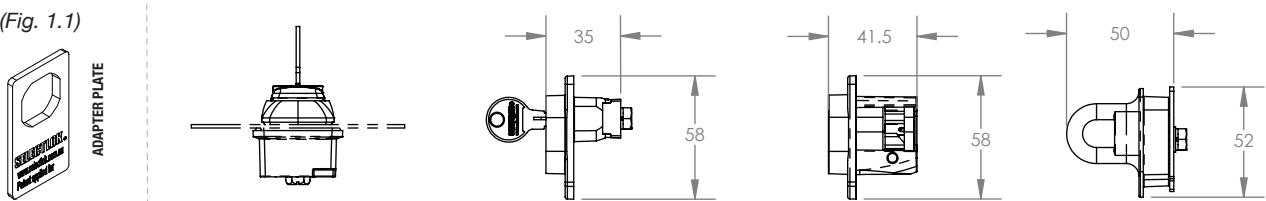
Evolution Series

FSDT Range

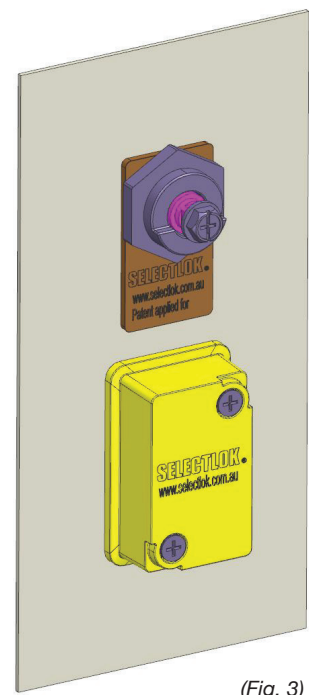
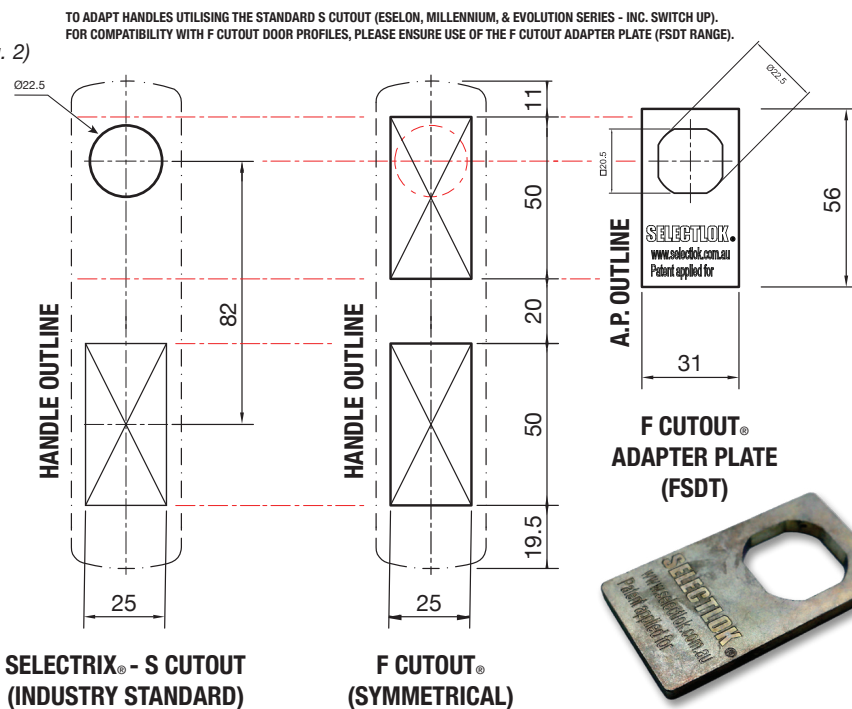
(Fig. 1)



(Fig. 1.1)



(Fig. 2)



(Fig. 3)

SWITCH UP, MODULAR SWING HANDLE

Evolution Series

FSDT Range

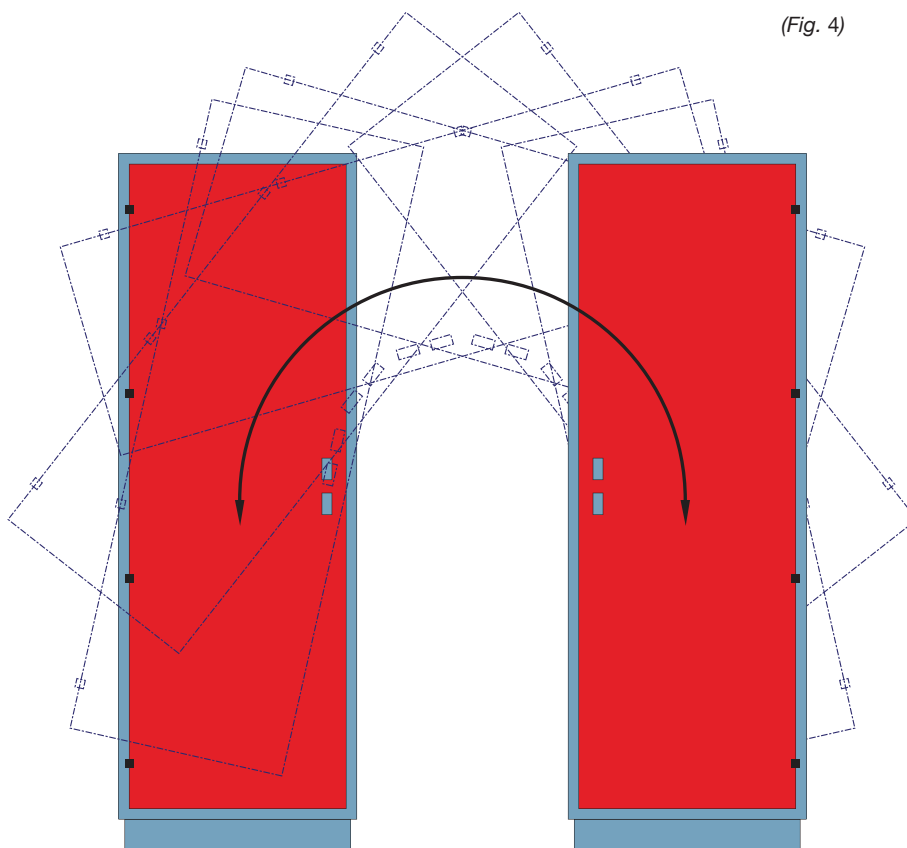
MODULAR SYMMETRY DOOR FRAME DESIGNS.

Biaxial symmetry at the frame is essential to rotating the door around its centre point.

Remarks



For best results: We recommend pairing our PI5346-MB-6-2-S (FSDT) Corner Hinges with handles fitted using either the F Cutout Adapter Plate or a dedicated F-Series handle profile handle when designing biaxial symmetrical door frames.



(Fig. 4)

ACCESSORY PADLOCK PLATE

Padlockable Handle Adapter Plate

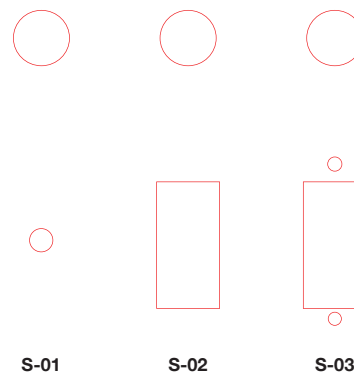
Part No. P1117 (Compatible with Fig. 6 - Version "S-01")

S CUTOUT | STD. PROFILE VARIATIONS

Compatible with:
ESELON, MILLENNIUM and EVOLUTION SERIES
SWING HANDLES



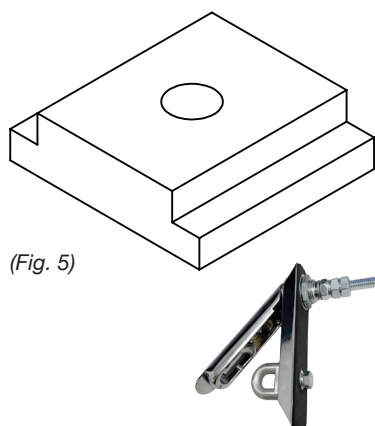
(Fig. 6)



S-01

S-02

S-03



(Fig. 5)

