

## INTEGRATED, INDUSTRY KEYED SWING HANDLE

### Evolution Series

#### FSDT Range

#### Features

- **Short cam-shaft design:** Ideal for tight builds or installations where trimming shafts isn't practical.
- **Sleek, low-profile styling:** Vandal-resistant and designed to suit any enclosure aesthetic.
- **Positive tactile feedback:** A satisfying "click" at 90° confirms full engagement during operation.
- **Integrated key barrel:** Ready to go with industry-popular key options: CL001, 92268, CL604 or CL003.
- **IP42 rated - Polyamide handle:** Ideal for indoor or controlled environments.
- **IP66 rated - Zinc handle:** Built for outdoor exposure; available in black powder-coated or chrome-plated finishes.
- **Modular F Cutout compatibility:** Perfect for biaxial symmetrical door frames using Selectlok's advanced F-Series Symmetrical Door Technology (FSDT).



#### Remarks

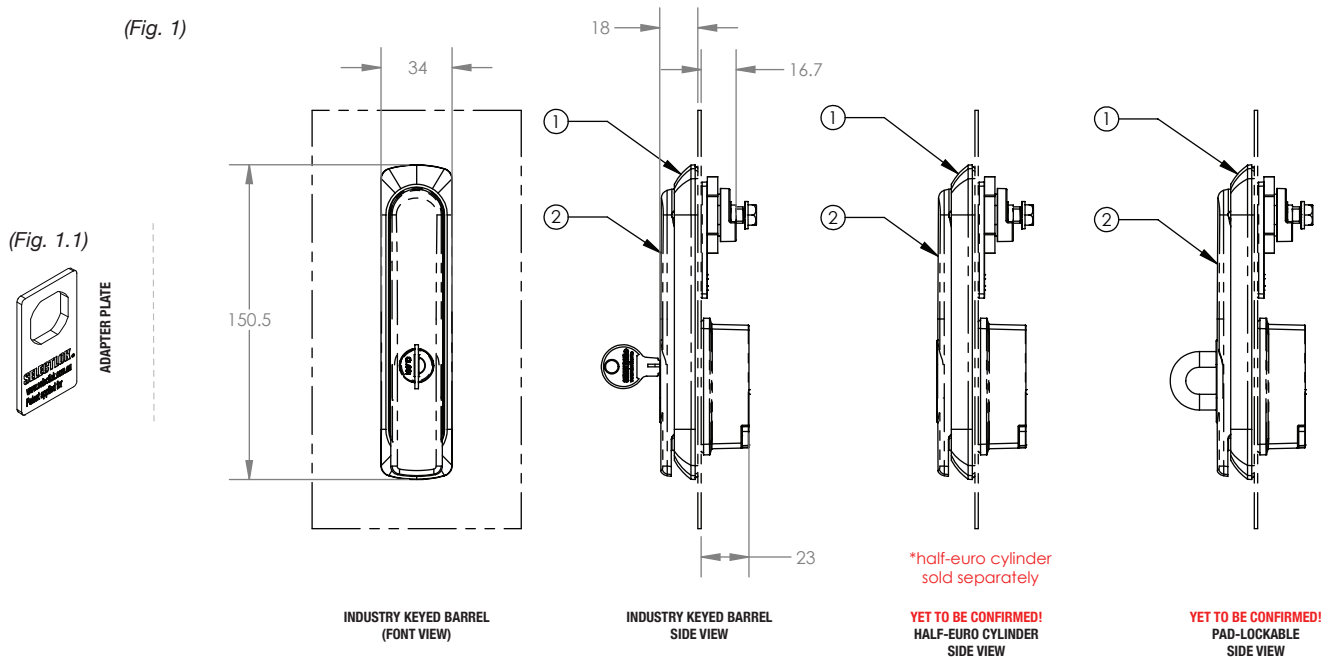
- **Single and three-point cams:** Available in various H-offset / dimensions (*note: three-point T-CAM's require a 4mm raised stud to ensure rod clearance*)
- **Recommended Pairing:** For best results, we recommend Selectlok's PI5346-MB-6-2-S F-Series Corner Hinges with handles featuring either a dedicated FSDT design, or the use of an F Cutout Adapter Plate in biaxial symmetrical builds.

Part Number	Description	Material & Finish	IP Rating	Remarks
1107S-EV1-SPBB-01	CL001   Swing Handle	Polyamide, Black	IP42	Evolution Series, Integrated Swing Handle - PA, Keyed CL001 Ind. Key Barrel
1107S-EV1-SPBB-02	92268   Swing Handle	Polyamide, Black	IP42	Evolution Series, Integrated Swing Handle - PA, Keyed 92268 Ind. Key Barrel
1107S-EV1-SPBB-03	604   Swing Handle	Polyamide, Black	IP42	Evolution Series, Integrated Swing Handle - PA, Keyed 604 Ind. Key Barrel
1107S-EV1-SPBB-07	CL003   Swing Handle	Polyamide, Black	IP42	Evolution Series, Integrated Swing Handle - PA, Keyed CL003 Ind. Key Barrel
1107S-EV1-SZBB-01	CL001   Swing Handle	Zinc, Black PC	IP66	Evolution Series, Integrated Swing Handle - Zn BLK, Keyed CL001 Ind. Key Barrel
1107S-EV1-SZBB-02	92268   Swing Handle	Zinc, Black PC	IP66	Evolution Series, Integrated Swing Handle - Zn BLK, Keyed 92268 Ind. Key Barrel
1107S-EV1-SZBB-03	604   Swing Handle	Zinc, Black PC	IP66	Evolution Series, Integrated Swing Handle - Zn BLK, Keyed 604 Ind. Key Barrel
1107S-EV1-SZBB-07	CL003   Swing Handle	Zinc, Black PC	IP66	Evolution Series, Integrated Swing Handle - Zn BLK, Keyed CL003 Ind. Key Barrel
1107S-EV1-SZCC-01	CL001   Swing Handle	Zinc, Chrome PLT	IP66	Evolution Series, Integrated Swing Handle - Zn CR, Keyed CL001 Ind. Key Barrel
1107S-EV1-SZCC-02	92268   Swing Handle	Zinc, Chrome PLT	IP66	Evolution Series, Integrated Swing Handle - Zn CR, Keyed 92268 Ind. Key Barrel
1107S-EV1-SZCC-03	604   Swing Handle	Zinc, Chrome PLT	IP66	Evolution Series, Integrated Swing Handle - Zn CR, Keyed 604 Ind. Key Barrel
1107S-EV1-SZCC-07	CL003   Swing Handle	Zinc, Chrome PLT	IP66	Evolution Series, Integrated Swing Handle - Zn CR, Keyed CL003 Ind. Key Barrel
1107S-FCUTOUT-01	F Cutout Adapter Plate	Zinc, Zinc PLT	IP42 / IP66	For adapting S Cutout swing handles to fit F Cutout door profiles <i>(Sold Separately)</i>
1107S-FCUTOUT-02	F Cutout Adapter Plate	Polyamide, Black	IP42 / IP66	For adapting S Cutout swing handles to fit F Cutout door profiles <i>(Sold Separately)</i>

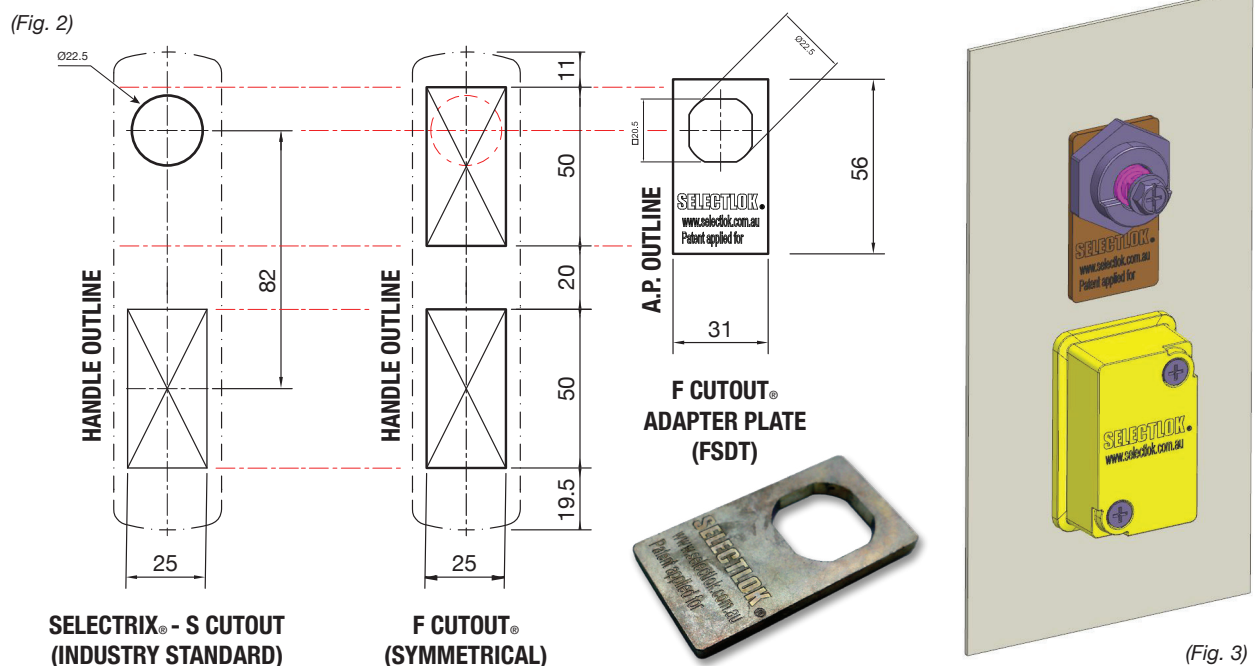
## INTEGRATED, INDUSTRY KEYED SWING HANDLE

### Evolution Series

FSDT Range



TO ADAPT HANDLES UTILISING THE STANDARD S CUTOUT (ESELON, MILLENNIUM, & EVOLUTION SERIES - INC. SWITCH UP).  
FOR COMPATIBILITY WITH F CUTOUT DOOR PROFILES, PLEASE ENSURE USE OF THE F CUTOUT ADAPTER PLATE (FSDT RANGE).



## INTEGRATED, INDUSTRY KEYED SWING HANDLE

### Evolution Series

FSDT Range

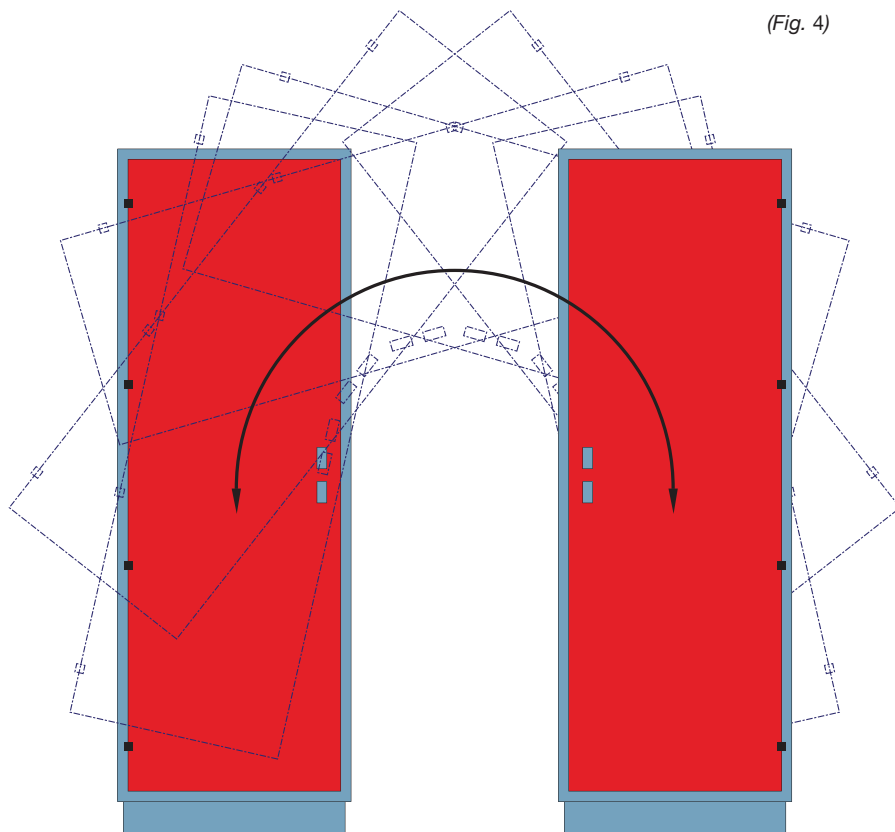
#### MODULAR SYMMETRY DOOR FRAME DESIGNS.

*Biaxial symmetry at the frame is essential to rotating the door around its centre point.*

#### Remarks



For best results: We recommend pairing our **PI5346-MB-6-2-S** (FSDT) Corner Hinges with handles fitted using either the **F Cutout Adapter Plate** or a dedicated F-Series handle profile handle when designing biaxial symmetrical door frames.



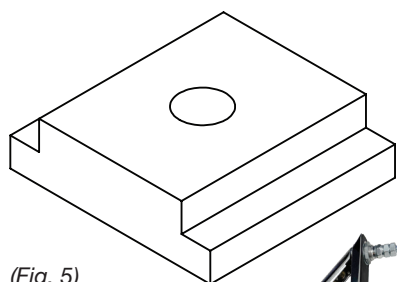
(Fig. 4)

## ACCESSORY PADLOCK PLATE

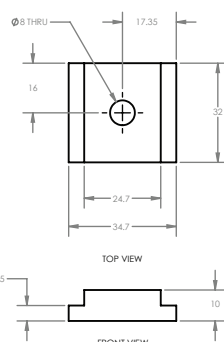
### Padlockable Handle Adapter Plate

Part No. P1117 (Compatible with Fig. 6 - Version "S-01")

- When adapting pad-lockable handles: Some Millennium and Eselon series pad-lockable swing handles feature a single-bolt lower mount design. These require a **P1117 Padlock Accessory Plate** when converting to either S or F Cutout profiles featuring a 25 x 50 (mm) lower cutout (P1117 available upon request; subject to MOQ and lead times.)



(Fig. 5)

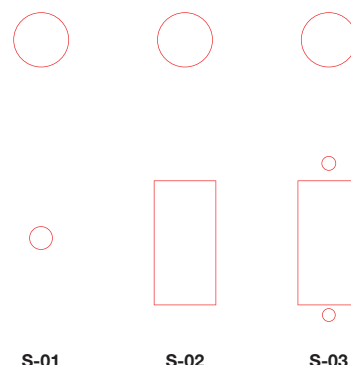


#### S CUTOUT | STD. PROFILE VARIATIONS

Compatible with:  
ESELON, MILLENNIUM and EVOLUTION SERIES  
SWING HANDLES



(Fig. 6)



S-01

S-02

S-03