

ROUND

Push-Button Compression Latch

Large Profile Size

Features

- Round-button/rounded handle design
- Large profile size
- Compression action
- Push-button operation
- Flush fitting
- Keyed: CH751
- Alternative key codes may be available on request (Subject to MOQ's and lead-times)

Materials & Finish

- **Handle body:** Zinc, die-cast
- **Finishes:** Black, powder-coated
- **Mounting bracket:** Mild steel, zinc plated
- **Arm/cam:** Zinc, die-cast
- **Panel thickness:** 1-4mm
- **Weight:** 357g
- **Dimensions:**
 - Handle body: 110mm (L) x 50mm (W) x 25.3mm (D)



Remarks

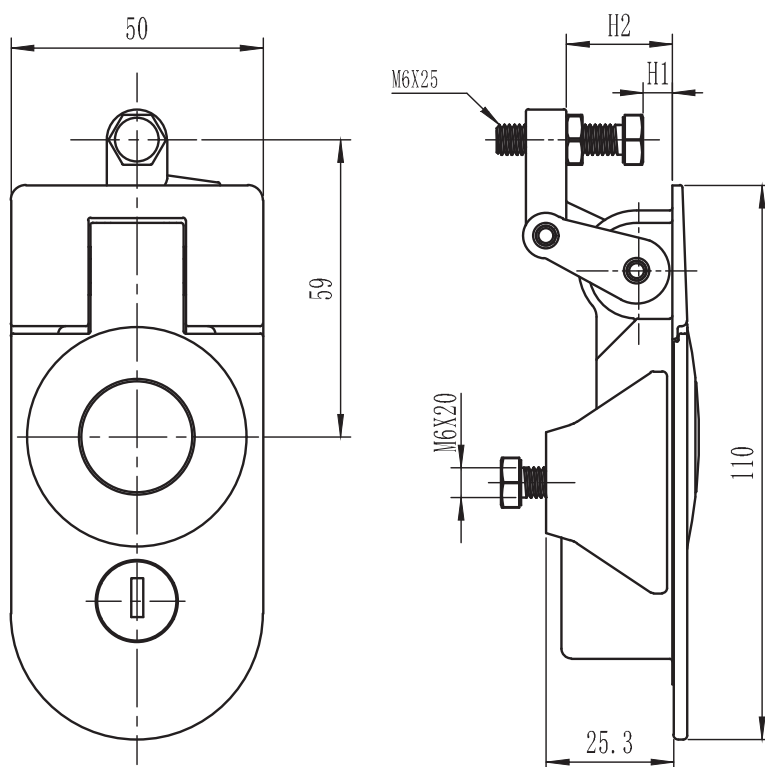
- **Grip Range:** See table below
- **Arm/cam height (internal):** See table below

Part Number	Description	Finish	H1 (Grip Range)	H2 (Arm/Cam Height - Int.)
10207B-CH751-BLK-1	Large Compression Latch, Round Push-Button, Keyed CH751	Black PC	15 - 30 (mm)	36 (mm)
10207B-CH751-BLK-2	Large Compression Latch, Round Push-Button, Keyed CH751	Black PC	30 - 45 (mm)	52 (mm)

ROUND-ENDED

Push Button Compression Latch

Large Profile



Cut Out

