

M199 SERIES - POLYAMIDE

50x50 Screw-On Hinge (SOH)

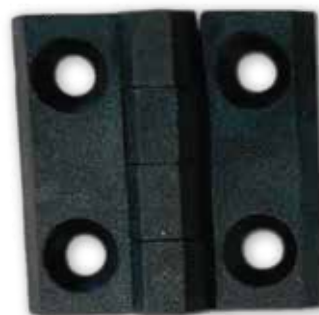
Industrial Butt Hinge

Features

- Industrial butt hinge, screw-on design (SOH)
- Engineered for use with flush mounted doors
- Suitable for outdoor applications
- 270 ° rotation
- Mounting:
 - Front fixing - Ø 6.6mm countersunk holes
 - Alternate fixings and/or dimensions - Availability on request (*MOQ's & ext. leadtimes may apply*)

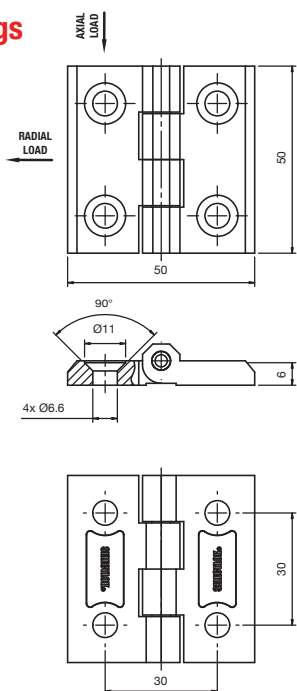
Materials & Dimensions

- Hinge: PA (polyamide)
- Pin: Stainless steel 304
- Finish: Black
- Dimensions: 50mm (L) x 50mm (W) x 15mm (H)



Part Number	Mounting	Dimensions (mm)	Finish
M199-2-0-3	Ø 6.6mm Countersunk Holes / Front Fixing	50mm (L) x 50mm (W) x 15mm (H)	PA, Black

Technical Drawings



Alternative Fixings

