

PI5367 SERIES

60mm Screw-On Hinges (SOH)

Industrial Butt Hinge

Features

- Industrial butt hinge, screw-on design (SOH)
- Engineered for use with flush mounted doors
- Suitable for outdoor applications
- 270 ° rotation
- Mounting:
 - Rear fixing - M8 x 14.5mm studs
 - Front fixing - Ø 9.0mm countersunk holes

Materials & Dimensions

- Hinge: Zinc, die-cast
- Pin: Stainless steel
- Finish: black, EDP coated *OR* chrome plated
- Base dimensions: 60mm (W) x ##mm (L) x 14.5mm (H)

**Refer to table below*

Remarks

- Alternate dimensions and/or fixing styles:
 - Availability on request. *(Subject to MOQ's & extended leadtimes)*



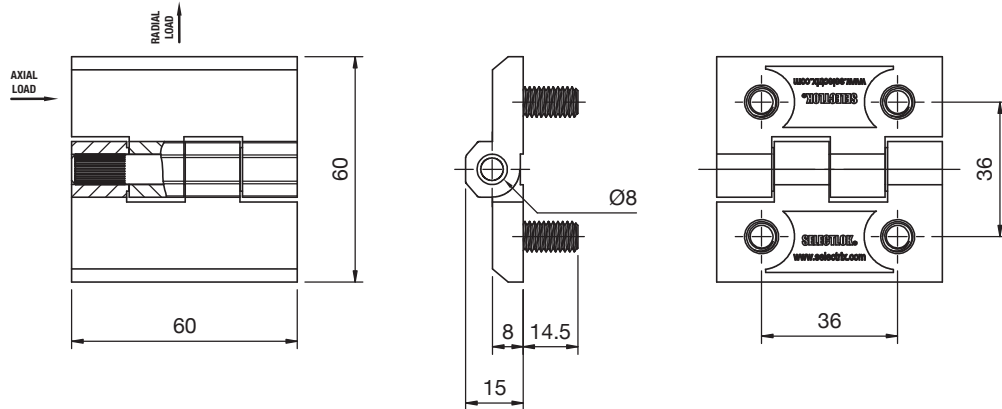
Part Number	Description	Mounting	Dimensions (mm)	Finish
PI3567-01-B	Black 60x90 SOH w/ Studs	M8 Studs x 14.5mm (L) / Rear Fixing	60 (W) x 90 (L) x 15 (H)	Black, EDPC
PI3567-01-C	Chrome 60x90 SOH w/ Studs	M8 Studs x 14.5mm (L) / Rear Fixing	60 (W) x 90 (L) x 15 (H)	Chrome, PLT
PI3567-02-B	Black 60x120 SOH w/ Studs	M8 Studs x 14.5mm (L) / Rear Fixing	60 (W) x 120 (L) x 15 (H)	Black, EDPC
PI3567-03-B	Black 60x60 SOH w/ Studs	M8 Studs x 14.5mm (L) / Rear Fixing	60 (W) x 60 (L) x 15 (H)	Black, EDPC
PI3567-03-C	Chrome 60x60 SOH w/ Studs	M8 Studs x 14.5mm (L) / Rear Fixing	60 (W) x 60 (L) x 15 (H)	Chrome, PLT
Part Number	Mounting	Material	Dimensions (mm)	
PI5367-03-GASKET	Gasket Seal To Suit 60mm x 60mm SOH (PI5367-03-#)	Neoprene	60 (W) x 60 (L)	

PI5367 SERIES

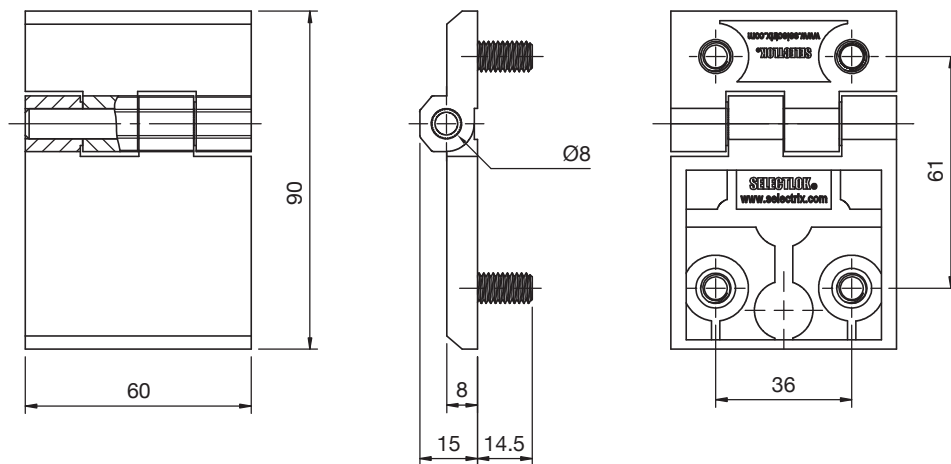
60mm Screw-On Hinges (SOH)

Industrial Butt Hinge

PI5367-03-#



PI5367-01-#



PI5367-02-#

