

## ADJ. FOLDING-T WITH HOLES

### Economy Range

#### Front Fixing

#### Features

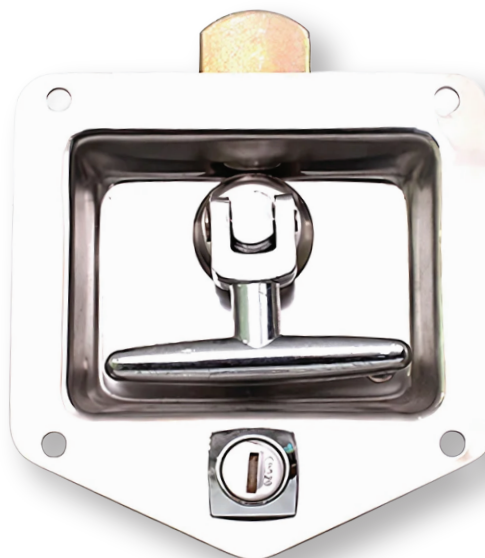
- Front fixing, 5.5mm holes
- Stainless steel dish
- Mixed key available
- Adjustable cam
- Ergonomic handle
- Rubber gasket supplied

#### Materials & Finish

- **Dish:** 304 stainless steel
- **Handle & lock:** Zinc die-cast, chrome PLT
- **Cam & bracket:** Zinc die-cast, zinc PLT

#### Remarks

- Run out item - while stocks last

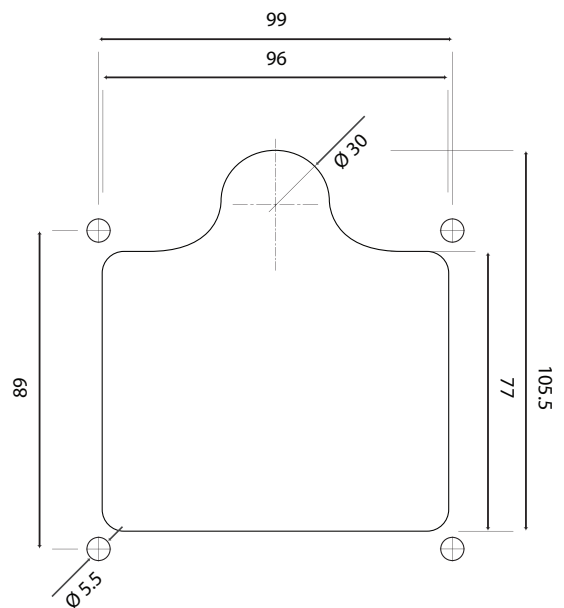
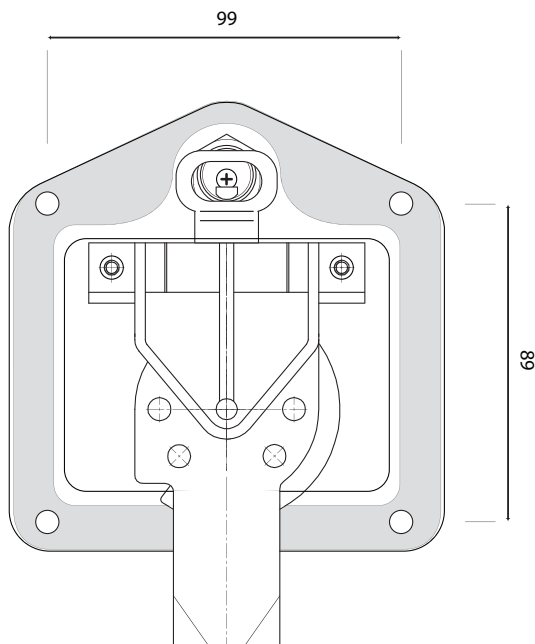
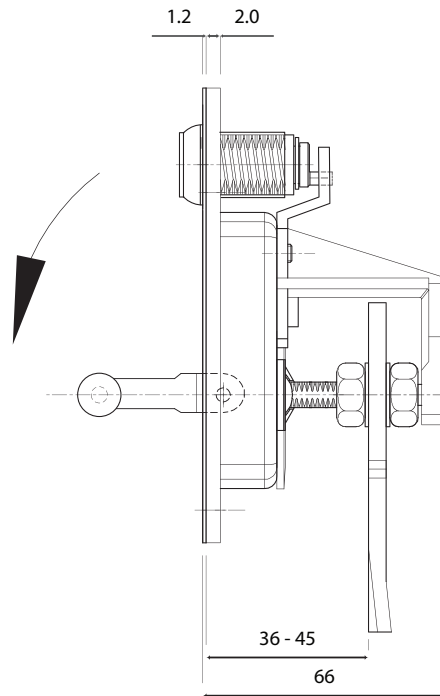
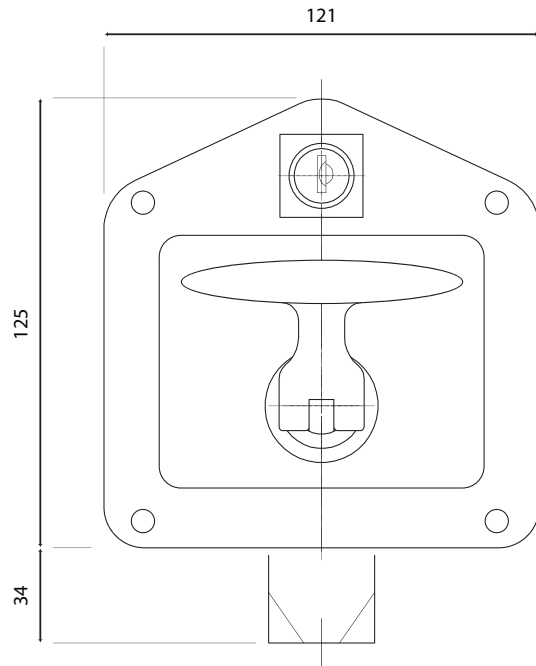


Part Number	Keyed	Finish	Fixing	Gasket Supplied	Item Status
P1065-01	Mixed	Polished / Chrome	Front, 5.5mm holes	Yes	Run Out - While Stocks Last

## ADJ. FOLDING-T WITH HOLES

### Economy Range

Front Fixing



CUTOUT