

ADJ. FOLDING-T WITH HOLES

Economy Range

Front Fixing

Features

- Suitable for single or multi-point locking
- 2x cam & key types available:
 - Flat cam (0mm), CH510 key (w/ dust cap)
 - Bent cam (+9mm), 001 key (w/o dust cap)
- Adjustable H= dimension
- Front fixing, 5mm holes
- Suitable for hole mounting
- Foam gasket supplied

Materials & Finish

- Dish available in:
 - Mild steel, matte black powder coated
 - 304 stainless steel, polished
- Handle & lock: Zinc die-cast, chrome plated
- Cam & bracket: Zinc die-cast, zinc plated

Accessories

- Pins for rods: 10502-PIN
- Rods: ROD###E

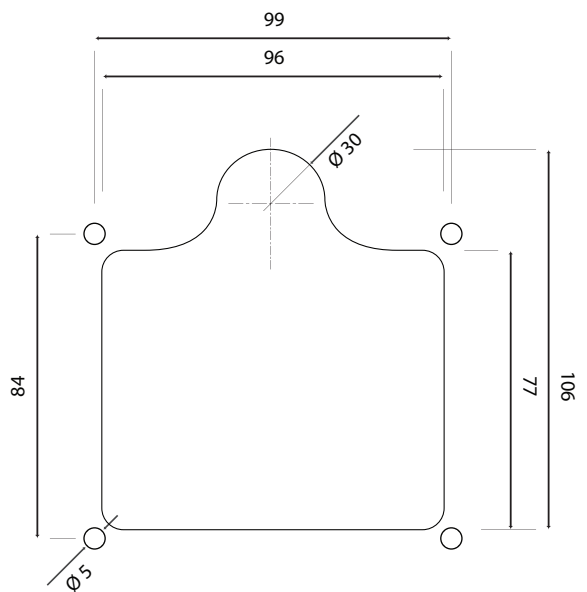
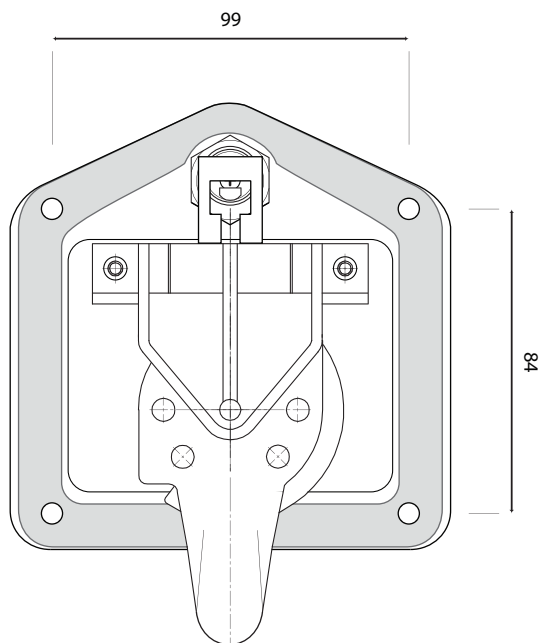
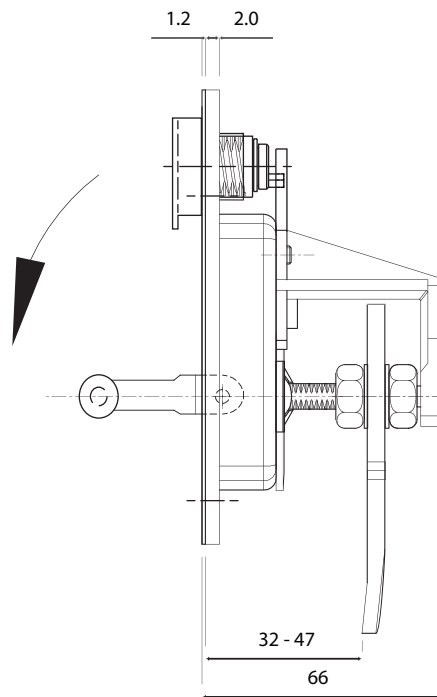
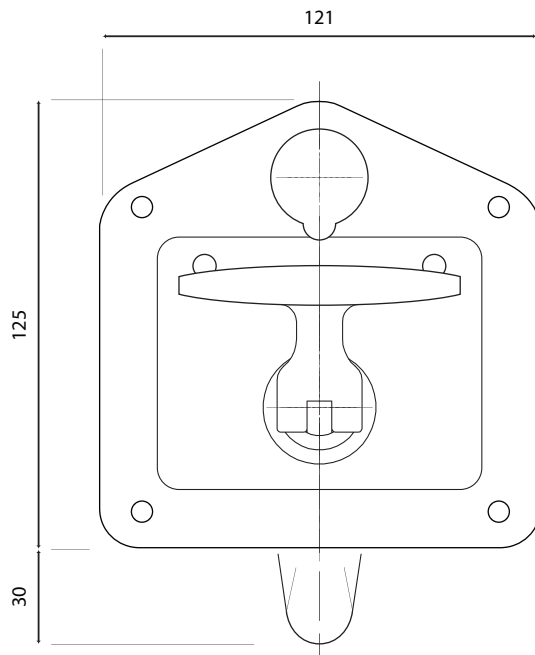


Part Number	Keyed	Cam Style	Finish	Fixing	Gasket Supplied
10502-CH510	CH510	Flat (0mm)	304 Stainless Steel	Front, 5mm Holes	Yes
10502-CH510-BLK	CH510	Flat (0mm)	Matte Black PC	Front, 5mm Holes	Yes
10502-001-BLK	001	Bent (+9mm)	Matte Black PC	Front, 5mm Holes	Yes

ADJ. FOLDING-T WITH HOLES

Economy Range

Front Fixing, Adjustable Flat Cam (with Dust Cap)

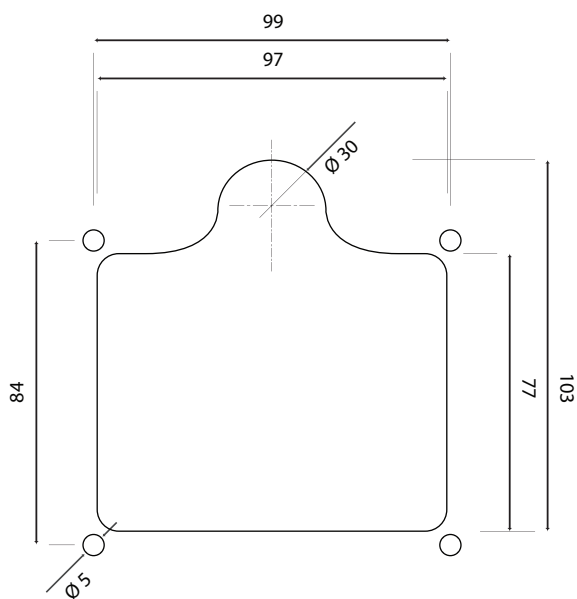
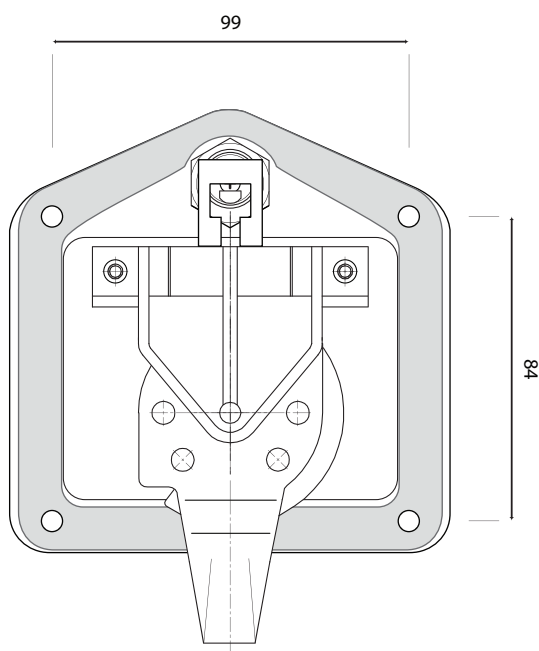
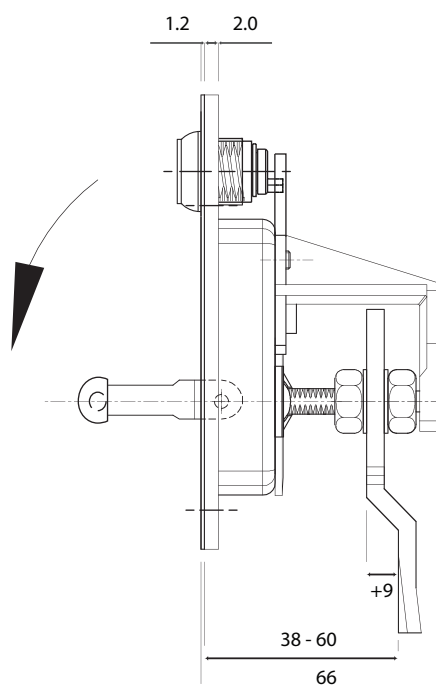
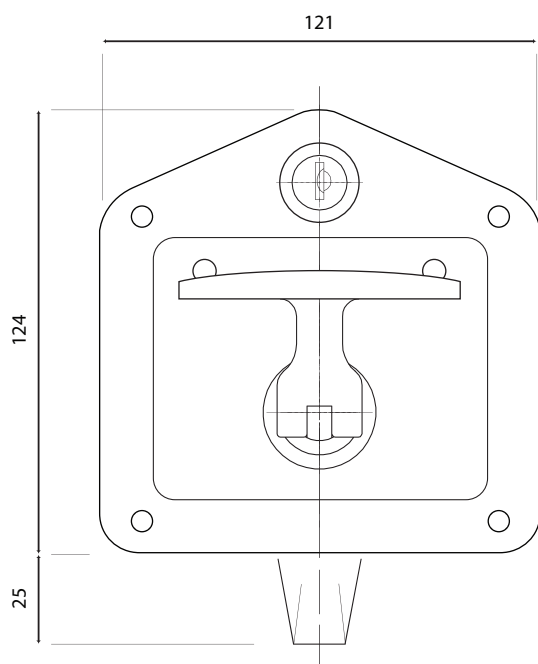


CUTOUT

ADJ. FOLDING-T WITH HOLES

Economy Range

Front Fixing, Adjustable Bent Cam (without Dust Cap)



CUTOUT