

F CUTOUT ADAPTER PLATE

FSDT Range

F-Series Symmetrical Door Technology

Features

- **F-Series Symmetrical Door Technology:** Engineered to support our advanced FSDT range of products.
- **S-to-F cutout versatility:** With the addition of Selectlok's patented F Cutout Adapter Plate, any Millennium, Eselon, or Evolution Series swing handle can be easily converted from the traditional S Cutout profile to fit *(becomes compatible with)* the new symmetrical F Cutout profile.
- **Modularity and symmetry:** Perfect for biaxial symmetrical door frames. Once installed, the combination of the F Cutout Adapter Plate + Millennium/Eselon/Evolution swing handle + F Cutout door profile enables 180° rotational handle symmetry, enabling same-handle suitability for both left-hand and right-hand door orientations.
- **Superior ingress protection:** The F Cutout Adapter Plate allows for retention of the handle/enclosures original IP-rating (when used "as-intended")



Dimensions, Materials & Finish

- **Dimensions:** 31mm (W) x 56mm (L) x 3.8mm (T)
- **Material and finish:**
 - Zn: Zinc alloy, zinc plated
 - PA: Polyamide, black

Remarks

- The traditional S Cutout door profile was initially a patented Selectlok/Selectrix original design. It has since gone on to become the standard industry cutout template.



Part Number	Description	Material & Finish	IP Rating	Remarks
1107S-FCUTOUT-01	FSDT F Cutout Adapter Plate	Zinc, Zinc PLT	IP42 / IP66	For adapting S Cutout swing handles to fit F Cutout door profiles
1107S-FCUTOUT-02	FSDT F Cutout Adapter Plate	Polyamide, Black	IP42 / IP66	For adapting S Cutout swing handles to fit F Cutout door profiles

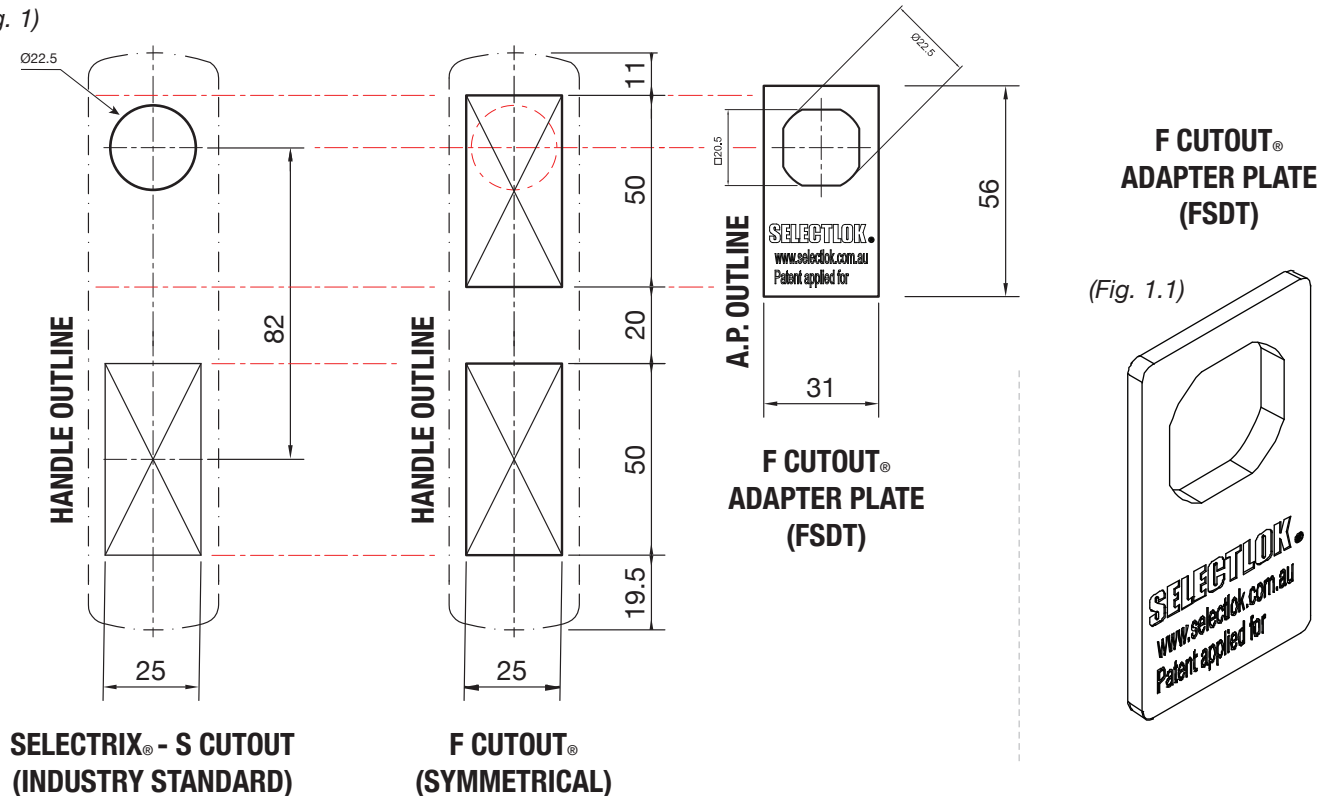
F CUTOUT ADAPTER PLATE

FSDT Range

F-Series Symmetrical Door Technology

TO ADAPT HANDLES UTILISING THE STANDARD S CUTOUT (ESELON, MILLENNIUM, & EVOLUTION SERIES - INC. SWITCH UP).
FOR COMPATIBILITY WITH F CUTOUT DOOR PROFILES, PLEASE ENSURE USE OF THE F CUTOUT ADAPTER PLATE (FSDT RANGE).

(Fig. 1)



(Fig. 2)

F CUTOUT ADAPTER PLATE

FSDT Range

F-Series Symmetrical Door Technology

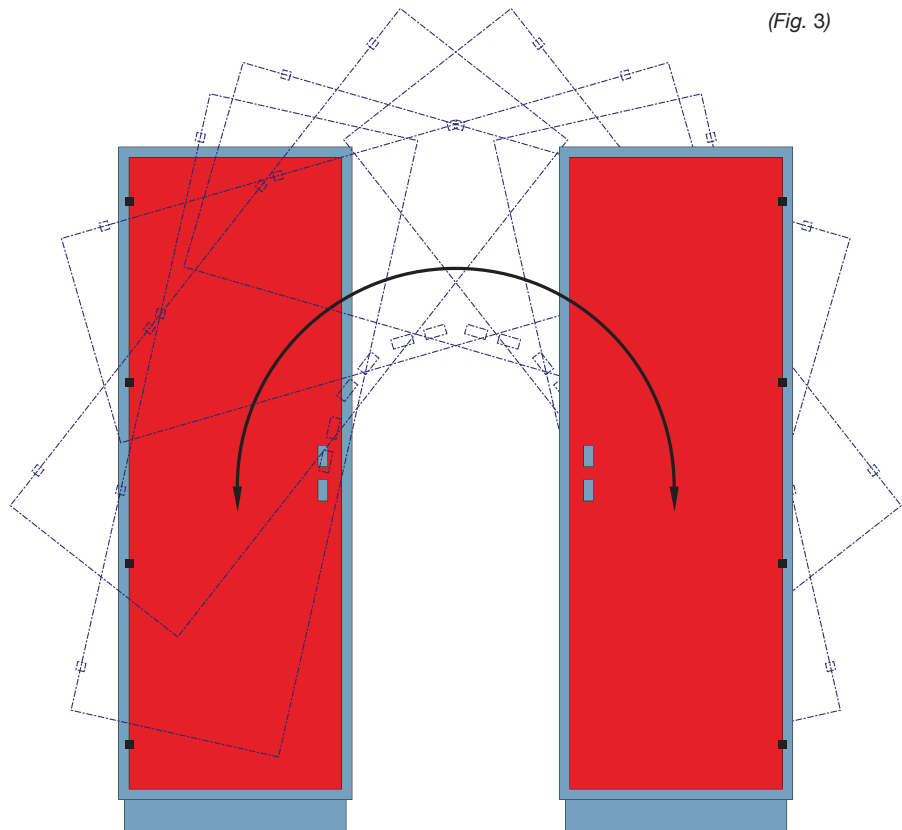
MODULAR SYMMETRY DOOR FRAME DESIGNS.

Biaxial symmetry at the frame is essential to rotating the door around its centre point.

Remarks



For best results: We recommend pairing our **PI5346-MB-6-2-S** (FSDT) Corner Hinges with handles fitted using either the **F Cutout Adapter Plate** or a dedicated F-Series handle profile handle when designing biaxial symmetrical door frames.



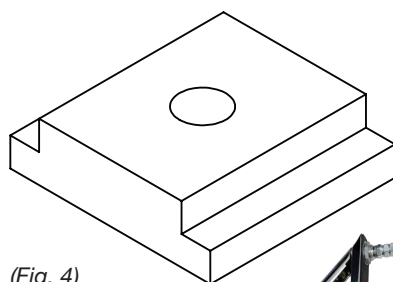
(Fig. 3)

ACCESSORY PADLOCK PLATE

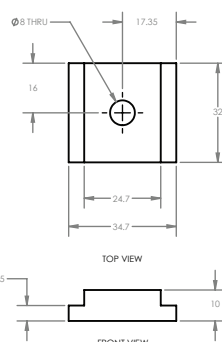
Padlockable Handle Adapter Plate

Part No. P1117 (Compatible with Fig. 5 - Version "S-01")

- When adapting pad-lockable handles: Some Millennium and Eselon series pad-lockable swing handles feature a single-bolt lower mount design. These require a **P1117 Padlock Accessory Plate** when converting to either S or F Cutout profiles featuring a 25 x 50 (mm) lower cutout (P1117 available upon request; subject to MOQ and lead times.)



(Fig. 4)



S CUTOUT | STD. PROFILE VARIATIONS

Compatible with:
ESELON, MILLENNIUM and EVOLUTION SERIES
SWING HANDLES

(Fig. 5)

