

## I0 SERIES

### Stand Off Insulators

Octagonal Shape, SEP-Type Insulators

#### Features

- Octagonal shape for easy installation
- High dielectric strength
- Arc quenching and tracking
- Wear and corrosion resistant
- High quality finish and appearance
- High mechanical strength
- Dimensional stability
- Moulded-in brass insert
- Chemical and oil resistant



#### Materials & Finish

- Glass reinforced polyester:
  - SMC (*sheet moulding compound*)
  - BMC (*bulk moulding compound*) / DMC (*dough moulding compound*)

Part Number	Voltage Withstand	Varistor (Vn)	Height	Width	Insert	Tensile	Torque
I025EN-E	8.5 KV	1000 a.c	25 mm	22 mm	M6	227 kg	1.4 kg-m / 10 ft-lb
I030EN-E	11 KV	1200 a.c	30 mm	30 mm	M6	272 kg	1.4 kg-m / 15 ft-lb
I030FN-E	11 KV	1400 a.c	30 mm	30 mm	M8	272 kg	3.5 kg-m / 20 ft-lb
I035FN-E	12.5 KV	1400 a.c	35 mm	32 mm	M8	295 kg	3.5 kg-m / 25 ft-lb
I040FN-E	14 KV	1500 a.c	40 mm	41 mm	M8	363 kg	3.5 kg-m / 25 ft-lb
I045FN-E	15.5 KV	1800 a.c	45 mm	46 mm	M8	454 kg	3.5 kg-m / 25 ft-lb
I050FN-E	15.5 KV	2000 a.c	50 mm	36 mm	M8	409 kg	3.5 kg-m / 25 ft-lb
I038GN-E	12 KV	1400 a.c*	38 mm	40 mm	M10	318 kg	6.9 kg-m / 50 ft-lb
I040GN-E	14 KV	1600 a.c	40 mm	41 mm	M10	363 kg	6.9 kg-m / 50 ft-lb
I050GN-E	15.5 KV	Not Avail. (ATP)	50 mm	46 mm	M10	500 kg	6.9 kg-m / 85 ft-lb
I060GN-E	21 KV	Not Avail. (ATP)	60 mm	60 mm	M10	909 kg	6.9 kg-m / 50 ft-lb
I075GN-E	28 KV	Not Avail. (ATP)	75 mm	50 mm	M10	681 kg	6.9 kg-m / 50 ft-lb
I050HN-E	15.5 KV	Not Avail. (ATP)	50 mm	50 mm	M12	681 kg	11.8 kg-m / 85 ft-lb
I075HN-E	28 KV	Not Avail. (ATP)	75 mm	50 mm	M12	681 kg	11.8 kg-m / 85 ft-lb

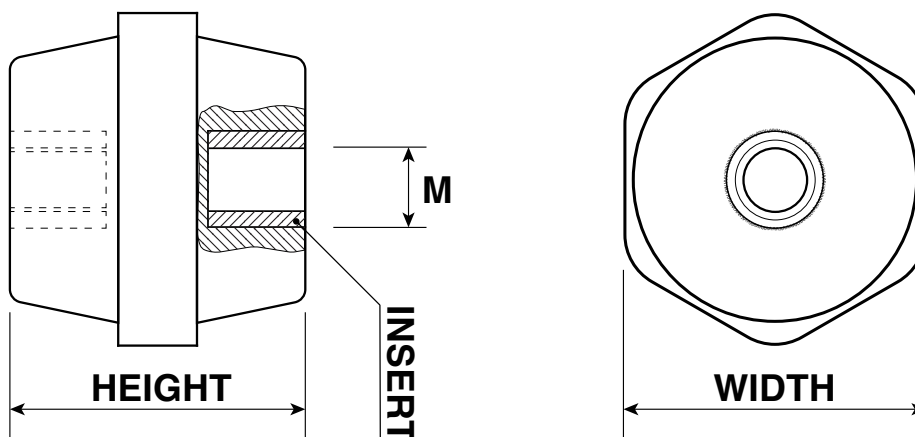
- Note:
- ATP: "At the time of publication"
  - Product/item values and specifications listed in the table above that are indexed with an asterisk (\*) cannot be confirmed as of **ATP** and are only a "possible" representative of values and/or specifications likely to be consistent with insulators of that material, size and/or insert.
  - Product/item values and specifications listed in the table above that are marked as "Not Avail./Available (**ATP**)" cannot be confirmed or advised as these had not been advised by the manufacturer **ATP** would only be a "possible" representative of the values and/or specifications likely to be consistent with insulators of that size and/or insert.
  - Selectlok Australia cannot confirm or advise at time of publication (**ATP**) whether any of the values or specifications listed above may/may not also be representative of insulators featuring within our range that are listed under other part number/product series.

## I0 SERIES

### Stand Off Insulators

Octagonal Shape, SEP-Type Insulators

#### Technical Drawing



#### Material Properties

Description	Values	Units	Specification
Operating voltage (AC)	600 ~ 3200	Volts (V)	SEP-Type Insulators
Operating Temperature	-40 ~ 140	°C	IEC
Glow-Wire Flammability	10 / 960	≤ 30 Sec / °C	IEC 60695-2-11
Flame Retardancy	10 / V0	≤ 10 Sec / Self Extinguishing	UL94 V0 (3mm)
Arc Resistance*	+ 180	Sec	ASTM D 495
Tracking Index*	+ 600	Volts	ATSM BS 5901
Dielectric Strength (SMC)*	12	KV / mm	ATSM D 149
Dielectric Strength (BMC/DMC)*	10	KV / mm	ATSM D 149
Flexural Strength (SMC)*	1,550	Kgf / Cm <sup>2</sup>	ASTM D 790
Flexural Strength (BMC/DMC)*	900	Kgf / Cm <sup>2</sup>	ASTM D 790

#### Note:

- Product/item values and specifications listed in the table above that are indexed with an asterisk (\*) cannot be confirmed as of **ATP** and are only a "possible" representative of values and/or specifications likely to be consistent with insulators of that material, size and/or insert.
- Values and specifications listed in the table above are representative (only) of products falling within the I0###N-E series (part no. range) of SEP-type, medium-low voltage stand off insulators.
- Selectlok Australia cannot confirm at time of publication whether the values listed may/may not also be representative of insulators featuring within other part number series within the Selectlok products range.

\*\*\* END OF DOCUMENT \*\*\*

**Disclaimer:** The information in this data sheets gives general characteristics of the material. Whilst all possible care has been taken to ensure this information is correct Selectlok Australia cannot accept any liability nor is any liability on the part of the manufacturer or distributor to be implied as a result of the data given as conditions and methods of use are beyond our control. **The user must independently confirm suitability for the application prior to commercial use.**

The above document is not a certified test report and is derived from information of mixed sources, supplied by the manufacturer and/or independent sources. The contents of this datasheet are meant only for information purposes only relating to product & material quality, industry standards and/or guidelines. The contents of this report should not be used for promotion, advertisement, evidence or for litigation purposes. Selectrix Group and Selectlok Australia accept no liability for product failures, damages, harm, injury or death that may/may not arise from instances of use in which insulators are unfit for the end users intended purpose and where specifications are not specified as 100% confirmed by either Selectrix/Selectlok or via the independant carrying out of material or product type testing.