

NP0044 | CONTROL BOX, SHUNT, REMOTE FOB & CABLES

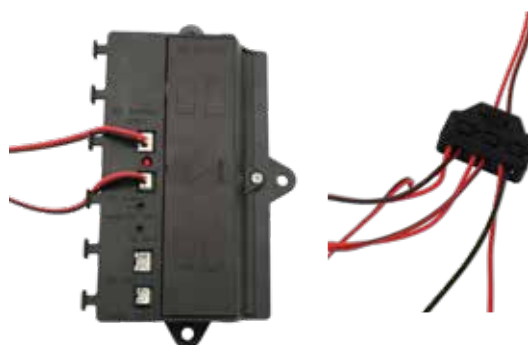
6V / 12V Electronic Central Locking (ELS)

6V DC / 12V Switching or Non-Switching / Hardwired (Vehicle) or Wireless (Standalone) Power Supply

Features

- Componentry for assembly of *(complete or part there of:)* 6V/12V electronic central locking / ELS system
 - Control box
 - Shunt connectors
 - Push-button remote control fob
 - 6V power supply cables
 - 12V power supply cables
- Can be configured as:
 - Hardwired - Via 12V vehicle or 12V standalone power supply (long cable harness)
 - Wireless - 6V / AA batteries (integrated) power supply
 - Semi-wireless - Via a "short-tethered" 12V standalone / "side-by-side" power supply (short cable harness)
- Compatible power supplies:
 - 6V - DC
 - 12V - Switching/non-switching
 - 6V/12V - Via control box

(control box converts 12V supply to 6V, Do Not install AA batteries)



Component Specifications

Control Box

- Base dimensions: 144mm (H) x 88mm (W) x 21.5mm (D)
- Mounting Point profile: 3x Ø5mm (dia)
 - North/South hole centres - 132mm (HC)
 - RHS hole centre -
 - 82mm (from LHS edge), -6mm (from RHS edge)
- Supply plugs:
 - 12V switching output, 6V output, 12V input, centre control
- Three levels of control (for both):
 - *Without 12V switching *(and)* *With 12V switching



Shunt Connector

- Terminal tunnel: Ø 0.61mm (conductor OD)
- Terminal supply: +/- input, +/- output

Push-Button Remote Control FOB

- Three levels of alignment:
 - Level 3 - Remote controller and control box alignment
 - Level 2 - *(A)* Remote controller and control box alignment *(B)* If the remote controller and control box are aligned with switch 1, then also align the rv door lock and remote control with switch 1. If they are using switch 2, then do the same as above to align with switch 2.
 - Level 1 - Control box and door lock alignment

Power Supply Cables

- 6V Short Harness: 24 AWG / Ø 0.511mm x 2 core
 - Length - 0.2m / 200mm (L)
 - Plug - PH2.0 (small), 2 Pin
- 6V Long Harness: 24 AWG / Ø 0.511mm x 2 core
 - Length - 2m / 2,000mm (L)
 - Plug - PH2.0 (small), 2 Pin
- 12V Long Harness: 24 AWG / Ø 0.511mm x 2 core
 - Length - 2m / 2,000mm (L)
 - Plug - XH2.54 (large), 2 Pin

NP0044 | CONTROL BOX, SHUNT, REMOTE FOB & CABLES

6V / 12V Electronic Central Locking (ELS)

6V DC / 12V Switching or Non-Switching / Hardwired (Vehicle) or Wireless (Standalone) Power Supply

Installation

Please refer to the control box ****user manual**** for user setup and installation instructions.

- Including: Product overview, wiring diagrams, power connection instructions, control level instructions (*power supply*) and remote controller alignment.

Remarks

- Components (*sold separately*)
- Shunt connectors: Alternative sizes/terminal qty available upon request (*subject to additional costs, MOQs and lead times*)
- Compatible with integrated systems (incorporating): ELS | NP0044: folding-t handles w/ mounting bracket and/or push-button compression latches.

NB

ELS | ECL | IECL | MLA

Acronyms; Commonly associated w/ reference to the actuation methods of our range of **Electronic Locking Solutions** products.

- **Including:** Electronically powered central locking actuator kits (6V/12V/24V), digital access and smart locking systems, electronic lock positioning (park) sensors, control boxes, shunt connectors, remote controls and batteries, etc.

ELS: Electronic Locking Solutions

ECL: Electronic Central Locking

IECL: Integrated Electronic Central Locking

MLA: Manual Locking Actuation

INTEGRATED ELECTRONIC CENTRAL LOCKING (ELS) COMPONENTS

Part Number	Description	Actuation	Compatible Power Supply (Voltage)	Configurations
NP0044-007	NP0044 Control Box	Int. Central Locking (ELS)	6V DC / 12V Switching/Non-Switching	Hardwired, Semi-Wireless, Wireless

Part Number	Description	Actuation	Compatible Power Supply (Voltage)	Levels Of Alignment
NP0044-008	NP0044 Push-Button Remote Control FOB	Int. Central Locking (ELS)	6V DC / 12V Switching/Non-Switching	Three: Level 3, Level 2 (A/B) & Level 1

Part Number	Description	Actuation	Compatible Power Supply (Voltage)	Terminal: Tunnel / Conductor Supply
NP0044-009	NP0044 Shunt Connector	Int. Central Locking (ELS)	6V DC / 12V Switching/Non-Switching	Ø 0.61mm (OD) +/- Input, +/- Output

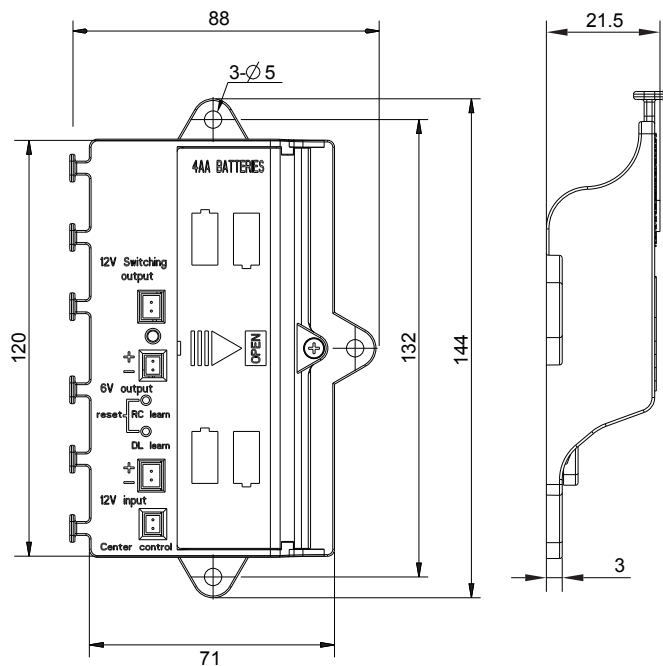
Part Number	Description	Actuation	Wiring Harness	Cable Length	Plug
NP0044-010-0200	NP0044 Power Supply Cables	Int. Central Locking (ELS)	6V Short Harness: 24 AWG x 2 Core	0.2m / 200mm	PH2.0 (Small), 2 Pin
NP0044-010-2000	NP0044 Power Supply Cables	Int. Central Locking (ELS)	6V Long Harness: 24 AWG x 2 Core	2m / 2,000mm	PH2.0 (Small), 2 Pin
NP0044-011-2000	NP0044 Power Supply Cables	Int. Central Locking (ELS)	12V Long Harness: 24 AWG x 2 Core	2m / 2,000mm	XH2.54 (Large), 2 Pin

NP0044 | CONTROL BOX, SHUNT, REMOTE FOB & CABLES

6V / 12V Electronic Central Locking (ELS)

6V DC / 12V Switching or Non-Switching / Hardwired (Vehicle) or Wireless (Standalone) Power Supply

CONTROL BOX



PUSH-BUTTON

REMOTE CONTROL FOB



POWER SUPPLY

CABLES

SHUNT CONNECTORS

