

TCAM

Three-Point Cam With Stopper

Suits Quarter-Turns and IND-C, Switch Up & Evolution Series Swing Handles

Features

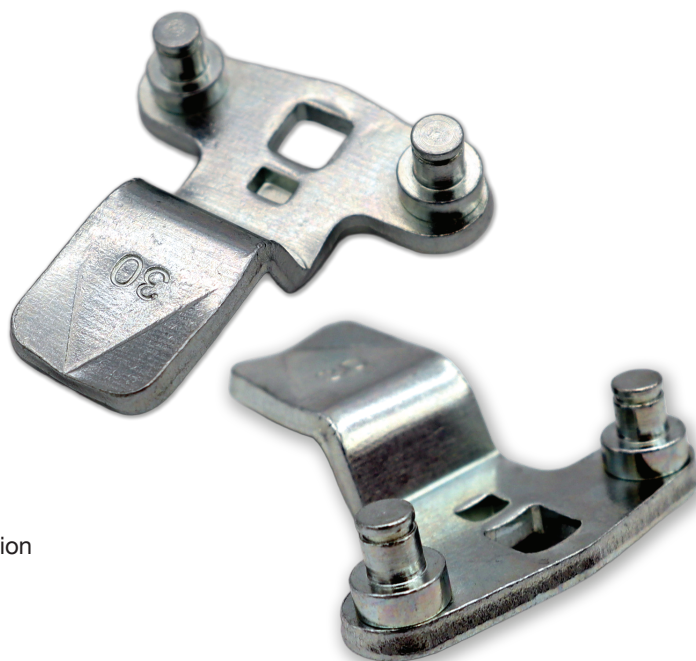
- Three-point with stopper
- Cam length: 45mm
- Given height/offset is the H= dimension:
 - This is the measurement from the face of the door, to the contact point on the cam (See diagram on pg. 2)
- Stainless steel range available on request:
 - MOQ's and extended lead times may apply

Materials & Finish

- Mild steel
- Zinc plated
- 4mm material thickness

Remarks

- Raised stud are required for use with Switch Up & Evolution series swing handles for clearance

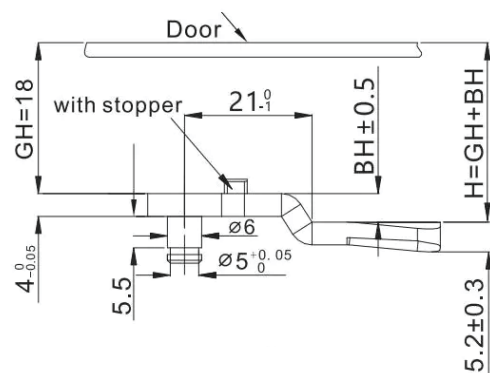
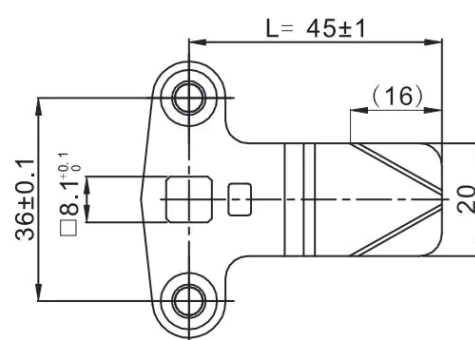
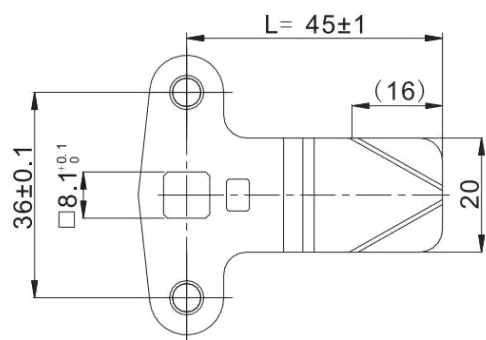


Part Number	Description	H= Dimension	Studs	Cam Length	Material
TCAM-1-4	Three-Point Cam w/ Stopper	4mm	Normal (0mm)	45mm	Mild Steel, Zinc PLT
TCAM-2-26	Three-Point Cam w/ Stopper	26mm	Raised (4mm)	45mm	Mild Steel, Zinc PLT
TCAM-2-28	Three-Point Cam w/ Stopper	28mm	Raised (4mm)	45mm	Mild Steel, Zinc PLT
TCAM-2-30	Three-Point Cam w/ Stopper	30mm	Raised (4mm)	45mm	Mild Steel, Zinc PLT
TCAM-2-32	Three-Point Cam w/ Stopper	32mm	Raised (4mm)	45mm	Mild Steel, Zinc PLT

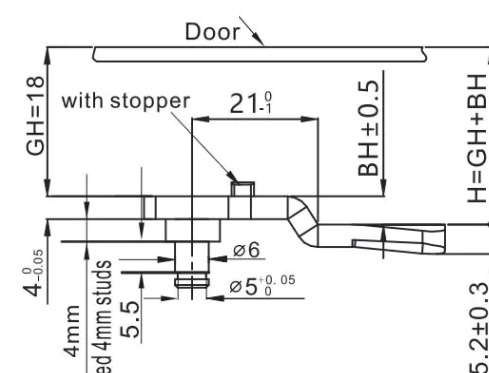
TCAM

Three-Point Cam With Stopper

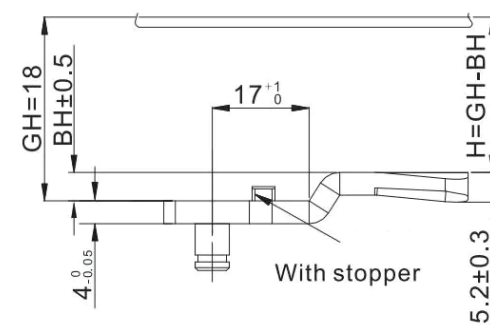
Suits Quarter-Turns and IND-C, Switch Up & Evolution Series Swing Handles



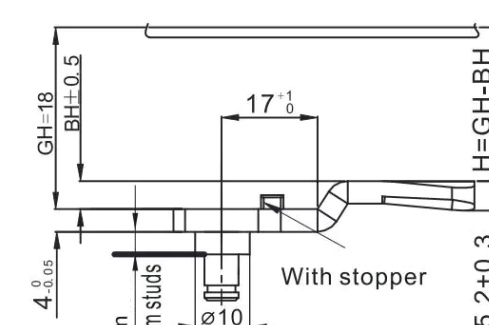
Reversed



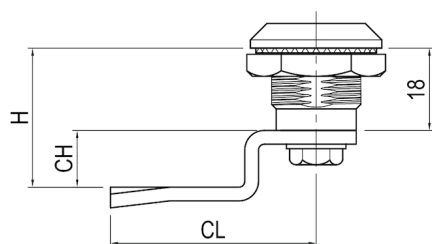
Reversed



Offset



Offset



$$H = 18 + CH$$

Not sure what size H dimension you need?

The image to the left is a generalised diagram showing how to calculate your H dimension if the quarter turn housing is 18mm (standard)