

# FLUSH PULL RING LATCH

## MATERIAL & FINISH:

- ABS
- Nylon



DESCRIPTION	PART NUMBER
Pull ring latch	94009



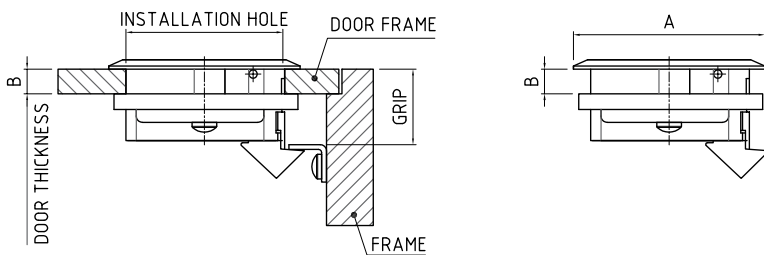
# FLUSH PULL RING LATCH STAINLESS STEEL

## FEATURES:

- Pull the handle to open
- Suitable for left and right hand opening

## MATERIAL & FINISH:

316 grade stainless steel, Mirror like finish



DIAMETER	PART NUMBER
61mm	94009SS