

STAINLESS STEEL D-PULL HANDLE

FEATURES:

- Suitable for outdoor applications
- Available in various centre distances

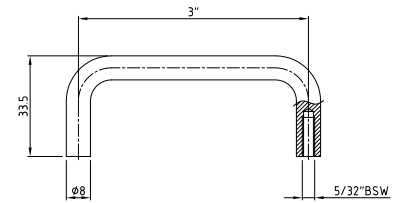
DIMENSIONS:

Shaft Diameter = 8mm

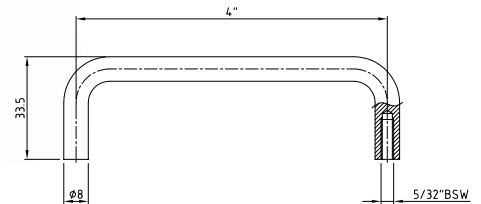
MATERIAL & FINISH:

Material Stainless steel (304 grade)

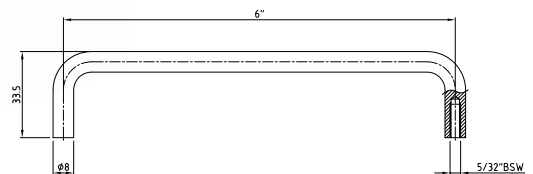
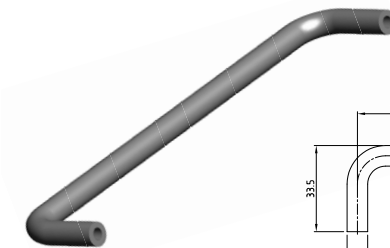
Finish Polished



VERSION 1



VERSION 2



VERSION 3



VERSION	CENTRE DISTANCE	PART NUMBER
1	76mm	MT203-3S
2	102mm	MT206-4S
3	152mm	MT206-6S