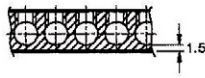
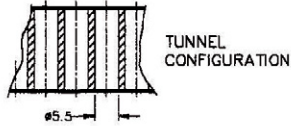
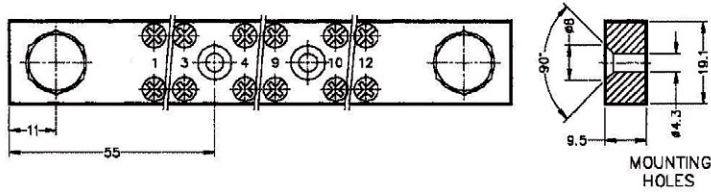
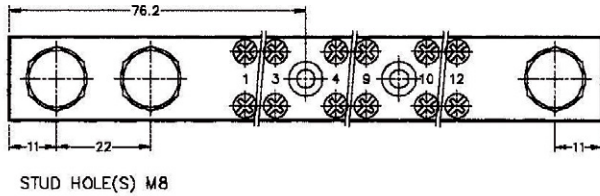


QX SERIES BAR



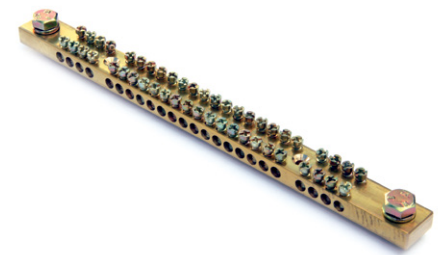
FEATURES:

- Domed terminal screws
- 2 main M8 studs
- 165 amp current rating
- 2 screws per tunnel
- Fixing holes countersunk 4mm clearance
- Tunnels for 16mm² cable
- Numbered to 3mm high
- Unnumbered or special numbering available on request
- Tunnel holes chamfered
- All edges chamfered
- RoHS compliant

MOUNTING HOLES::

- 50mm centres up to 18 pole
- 120mm centres over 18 pole

Add insulator for neutral bar
Part No: BISEL



NO OF POLES	PART NUMBER
6	B12006QX
12	B12012QX
18	B12018QX
24	B12024QX
30	B12030QX
36	B12036QX
42	B12042QX
48	B12048QX
54	B12054QX
60	B12060QX
72	B12072QX
84	B12084QX
96	B12096QX
108	B12108QX