

IX SERIES BAR

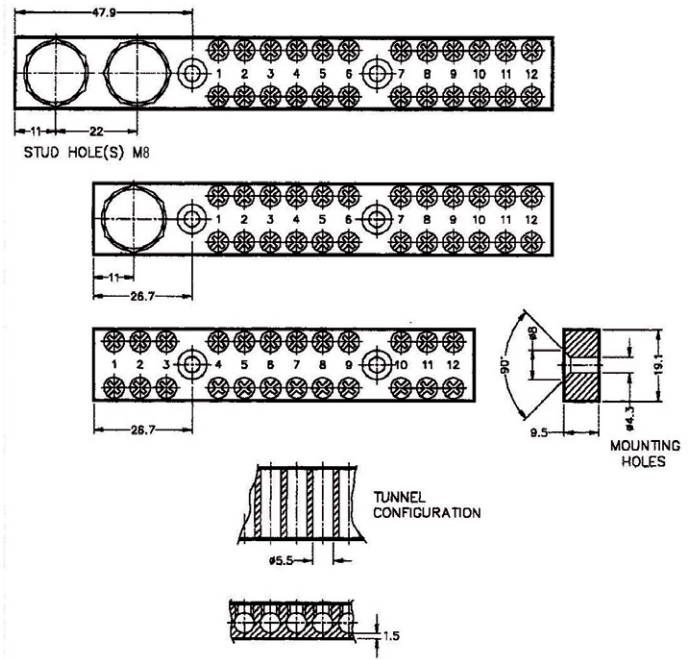
FEATURES:

- Domed terminal screws
- 2 main M8 studs
- 165 amp current rating
- 2 screws per tunnel
- Fixing holes countersunk 4mm clearance
- Tunnels for 16mm² cable
- Numbered to 3mm high
- Unnumbered or special numbering available on request
- Tunnel holes chamfered
- All edges chamfered
- RoHS compliant

MOUNTING HOLES:

- 50mm centres up to 18 pole
- 120mm centres over 18 pole

Add insulator for neutral bar
Part No: BISEL



NO OF POLES	PART NUMBER
6	B12006IX
12	B12012IX
18	B12018IX
24	B12024IX
30	B12030IX
36	B12036IX
42	B12042IX
48	B12048IX
54	B12054IX
60	B12060IX
72	B12072IX
84	B12084IX
96	B12096IX
108	B12108IX