

COMPRESSION ACCESSORY

FEATURES:

- Rear fixing
- 6mm compression action on closing and opening
- Suit most of swing handle
- Suit most of quarter turn range
- Suit T handles and L handles

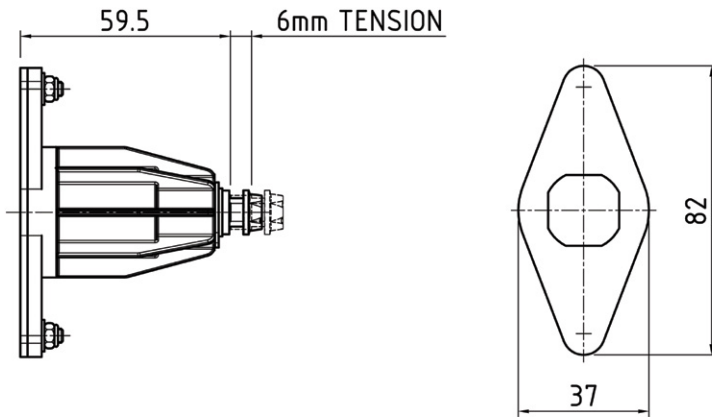
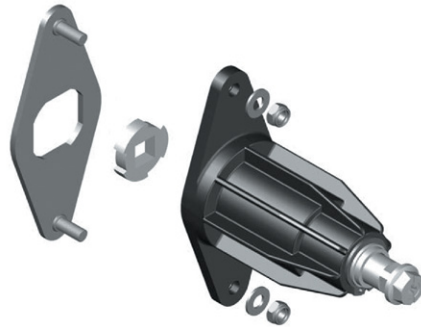
MATERIAL & FINISH:

Housing Black Polyamide
Shaft Zinc die cast, Zinc plated

STANDARD CAM DIMENSIONS:

- Single point cam with various 'H' dimensions
- [Adjustable cam \(required see page 2-14\)](#)

Patent/design registration applied for



DESCRIPTION	PART NUMBER
Compression accessory	PI5124

* Please contact our sales staff for other options.

ADJUSTABLE CAM

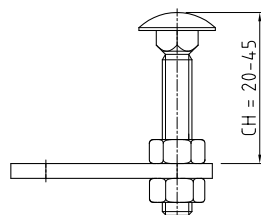
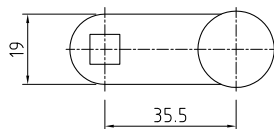
FEATURES:

- Adjustable range 'H' dimensions
- Ideally for use with [compression accessory](#)

MATERIAL & FINISH:

- Mild steel
- Zinc plated

* Stainless steel range, available on request



MATERIAL	PART NUMBER
Mild steel	PI5124-09