

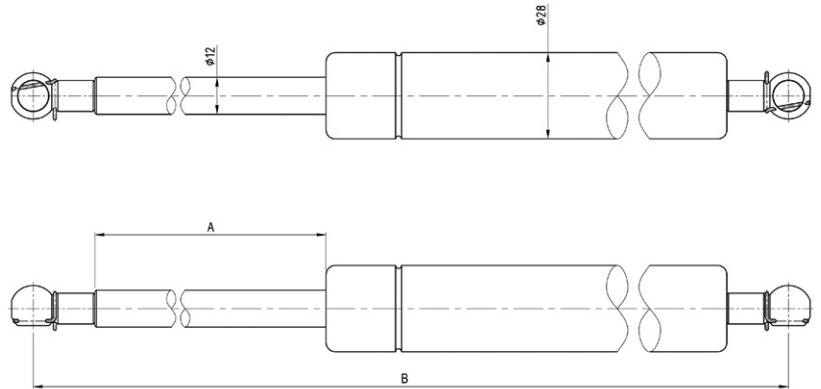
Ø12MM PISTON SHAFT

FEATURES:

- QPQ coating on shaft
- Steel ends

PISTON ROD & CYLINDER DIMENSIONS:

- ø12mm piston rod
- ø28mm cylinder



STROKE LENGTH ('A' in mm)	EXTENDED LENGTH ('B' in mm)	FORCE RANGE (in N)	PART NUMBER
215	530	100-1600	G530-12-C19-###N
250	620	100-1600	G620-12-C19-###N
285	670	100-1600	G670-12-C19-###N
300	700	100-1600	G700-12-C19-###N
310	750	100-1600	G750-12-C19-###N