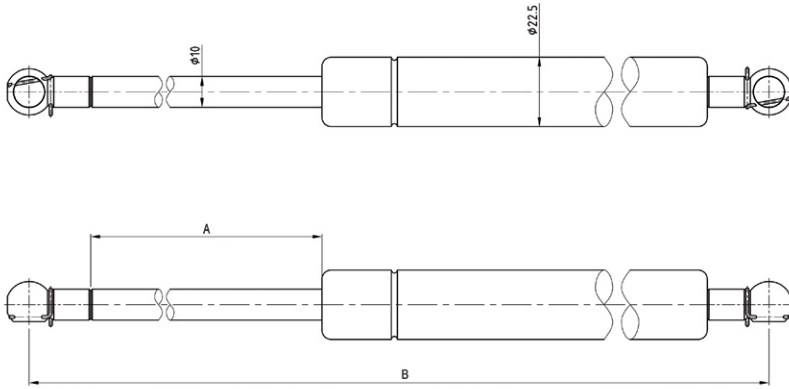


Ø10MM PISTON SHAFT



FEATURES:

- QPQ coating on shaft
- Steel ends

PISTON ROD & CYLINDER DIMENSIONS:

- ø10mm piston rod
- ø22.5mm cylinder



STROKE LENGTH ('A' in mm)	EXTENDED LENGTH ('B' in mm)	FORCE RANGE (in N)	PART NUMBER
185	450	100-1100	G450-10-C9A-###N
210	500	100-1100	G500-10-C9A-###N
210	540	100-1100	G540-10-C9A-###N
250	600	100-1100	G600-10-C9A-###N
285	650	100-1100	G650-10-C9A-###N
295	670	100-1100	G670-10-C9A-###N
290	700	100-1100	G700-10-C9A-###N
325	750	100-1100	G750-10-C9A-###N
360	830	100-1100	G830-10-C9A-###N
405	900	100-1100	G900-10-C9A-###N