

82MM STEPPED PINTLE HINGE

FEATURES:

- Brass
- Stainless steel pin
- High quality chrome plating
- Interchangeable male & female components

DIMENSIONS:

Height (female)	= 16mm
Height (male)	= 24mm
Length	= 82mm
Pin diameter	= 6mm

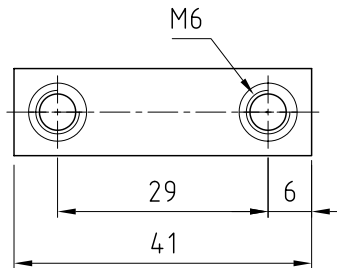
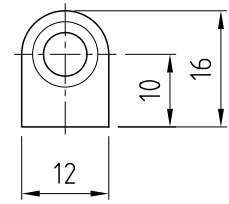
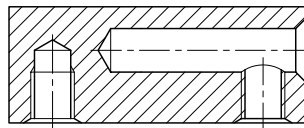
MATERIAL & FINISH:

Hinge Body	Brass, chrome plated
Pin	Stainless steel

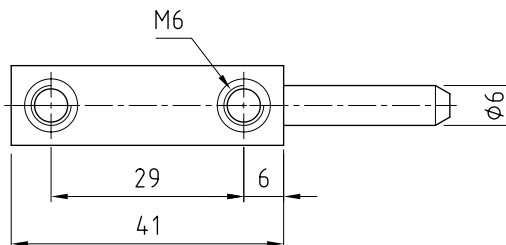
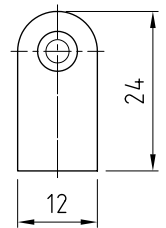
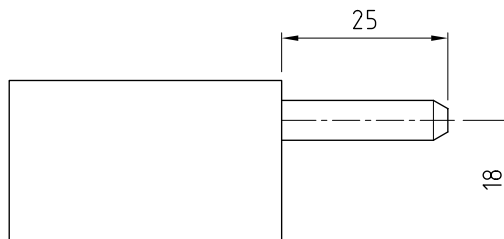
SCREWS:

[Hex multi head - F-HMHSS-M6X8](#)
[Socket head cap - F-SCS-M6X8-ZP](#)
 Refer to page 11-10 for entire range

Box quantity: 200



TOP



BOTTOM

FINISH	MATERIAL	PART NUMBER
Chrome plated	Brass	HIB880NS-E