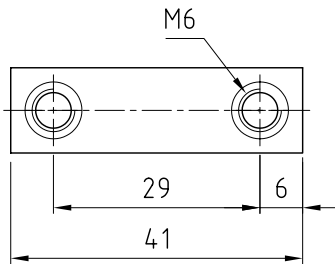
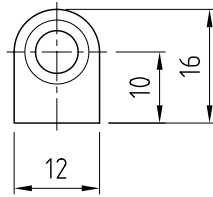
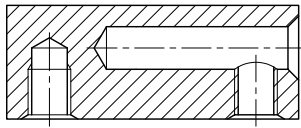
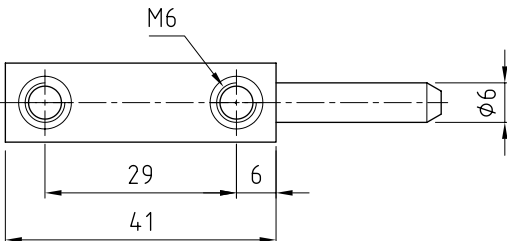
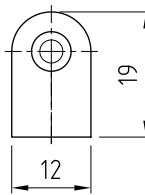
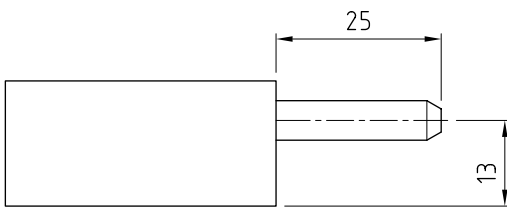


82MM STEPPED PINTLE HINGE



TOP



BOTTOM

FEATURES:

- Brass
- Stainless steel pin
- High quality chrome plating
- Interchangeable male & female components

DIMENSIONS:

Height (female) = 16mm
 Height (male) = 19mm
 Length = 82mm
 Pin diameter = 6mm

MATERIAL & FINISH:

Hinge Body Brass, chrome plated
 Pin Stainless steel

SCREWS:

[Hex multi head - F-HMHSS-M6X8](#)
[Socket head cap - F-SCS-M6X8-ZP](#)
[Refer to page 11-10 for entire range](#)

Box quantity: 200



FINISH	MATERIAL	PART NUMBER
Chrome plated	Brass	HIB820NS-E
Polished	Stainless steel	HIB820SS-316NS