

# 82MM PINTLE HINGE SHORT PIN

## FEATURES:

- Stainless steel pin
- Interchangeable male & female components

## DIMENSIONS:

Height = 16mm  
 Length = 82mm  
 Pin diameter = 6mm

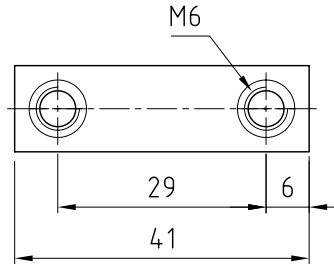
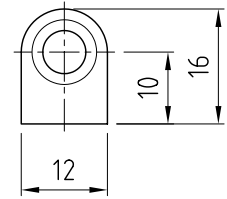
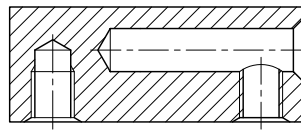
## MATERIAL & FINISH:

Hinge Body (refer to the table)  
 Pin Stainless steel

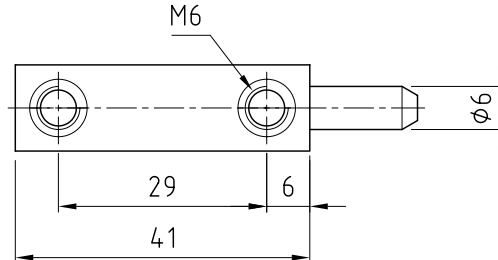
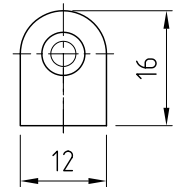
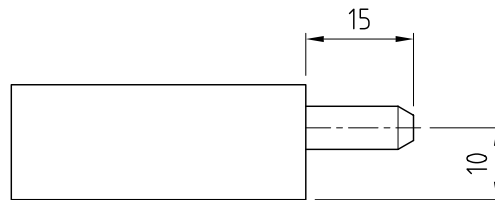
## SCREWS:

[Hex multi head - F-HMHSS-M6X8](#)  
[Socket head cap - F-SCS-M6X8-ZP](#)  
[Refer to page 11-10 for entire range](#)

Box quantity: 200



TOP



BOTTOM



FINISH	MATERIAL	PART NUMBER
Chrome plated	Brass	HIB650NS-SHORT