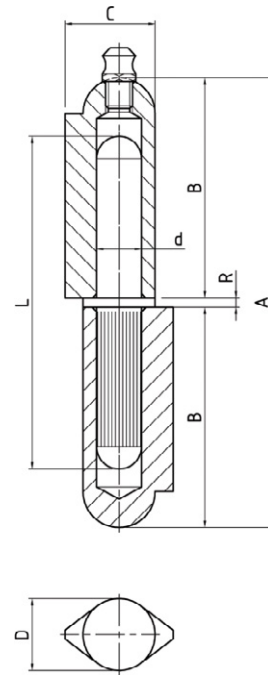


WELD ON HINGE

FEATURES:

- For weld-on applications
- Grease nipple



MATERIAL	A	B	C	R	D	L	d	BOX LOT	PART NUMBER
Aluminium	60	29	12.5	2	10	30	6	24	WOH-60-A
Aluminium	80	39	16	2	13	40	8	24	WOH-80-A
Aluminium	100	49	20	2	16	50	10	24	WOH-100-A
Aluminium	120	59	20	2	16	60	10	12	WOH-120-A
Steel, no grease nipple	60	29	12.5	2	10	30	6	24	WOH-60-S
Steel, no grease nipple	80	39	16	2	13	40	8	24	WOH-80-S
Steel, no grease nipple	120	59	20	2	16	60	10	12	WOH-120-S
Steel	60	29	12.5	2	10	30	6	24	WOH-60-S01
Steel	80	39	16	2	13	40	8	24	WOH-80-S01
Steel	100	49	20	2	16	50	10	24	WOH-100-S01
Steel	120	59	20	2	16	60	10	12	WOH-120-S01
Steel	150	74	25	2	20	75	13	12	WOH-150-S01
Steel	200	99	28.5	2	23	100	16	12	WOH-200-S01
Stainless steel	60	29	12.5	2	10	30	6	24	WOH-60-SS
Stainless steel	80	39	16	2	13	40	8	24	WOH-80-SS
Stainless steel	100	49	20	2	16	50	10	24	WOH-100-SS
Stainless steel	120	59	20	2	16	60	10	12	WOH-120-SS