

82MM PINTLE HINGE

SELECTLOK
STAINLESS
STEEL

FEATURES:

- Brass
- Stainless steel pin
- High quality chrome plating
- Interchangeable male & female components

DIMENSIONS:

Height = 16mm
Length = 82mm
Pin diameter = 6mm

MATERIAL & FINISH:

Hinge Body Brass, chrome plated
Pin Stainless steel

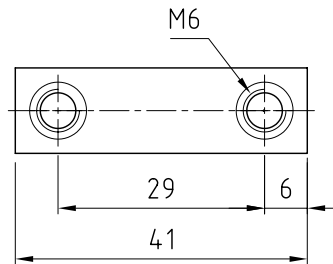
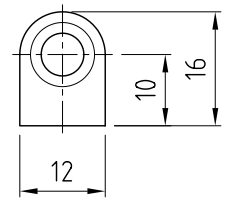
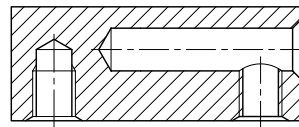
SCREWS:

[Hex multi head - F-HMHSS-M6X8](#)

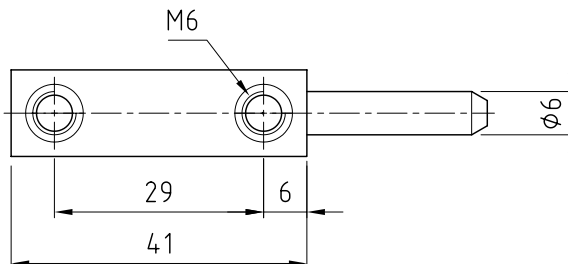
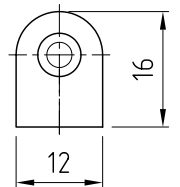
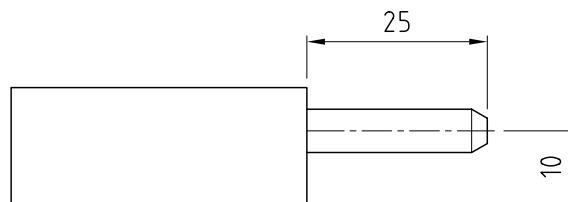
[Socket head cap - F-SCS-M6X8-ZP](#)

[Refer to page 11-10 for entire range](#)

Box quantity: 200



TOP



BOTTOM



FINISH	MATERIAL	PART NUMBER
Chrome plated	Brass	HIB650NS-E
Black EDP coated	Brass	HIB650E-BLKNS
Polished	Stainless steel 316	HIB650SS-316NS
Chrome plated	Zinc die cast	HIB650NS-ZN