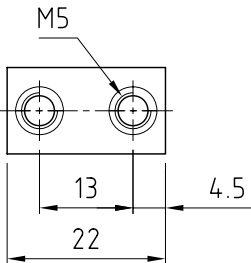
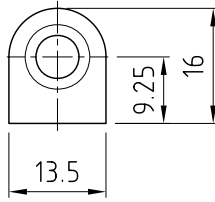
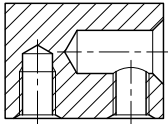
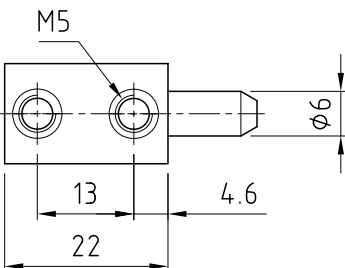
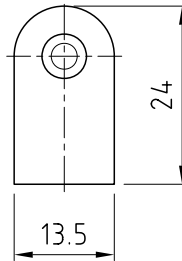
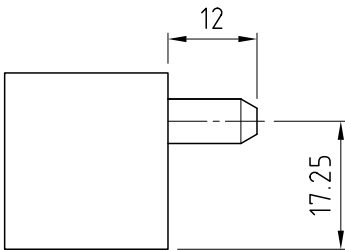


STEPPED PINTLE HINGE



TOP



BOTTOM

FEATURES:

- Brass
- Stainless steel pin
- High quality chrome plating
- Interchangeable male & female components

DIMENSIONS:

Height (female)	= 16mm
Height (male)	= 24mm
Length	= 44mm
Pin diameter	= 6mm

MATERIAL & FINISH:

Handle	Zinc die cast
Bracket	Zinc die cast
Dish	Stainless steel
Cam & Shaft	Mild steel, zinc plated

MATERIAL & FINISH:

Hinge Body	Brass, chrome plated
Pin	Stainless steel

Box quantity: 200



FINISH	MATERIAL	PART NUMBER
Chrome plated	Brass	HIB520NS-E