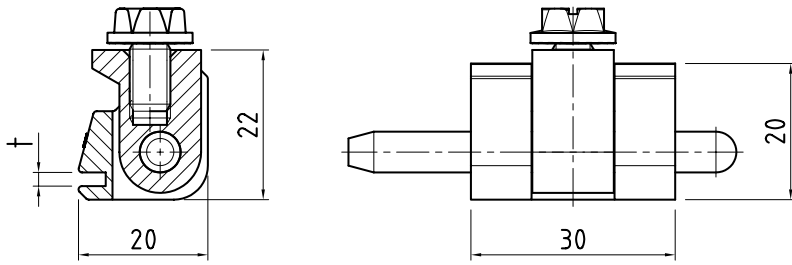


CORNER HINGE



FEATURES:

- Zinc die cast
- Delrin® pin
- Black EDP coated

PART NUMBER	FINISH	PIN	DOOR THICKNESS	STUD FIX
PI5346-MB-6-2-S	Matt black	Mild Steel	1.5mm to 2.3mm	YES
PI5346-B-1-2-S	Black	Delrin	1.5mm to 2.3mm	YES
PI5346-B-6-2-S	Black	Mild Steel	1.5mm to 2.3mm	YES

