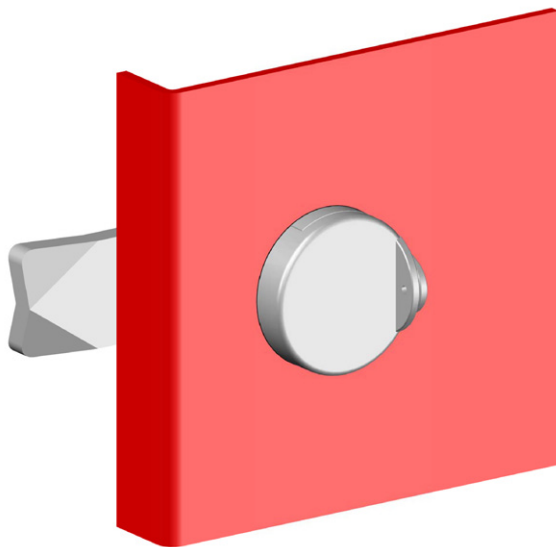
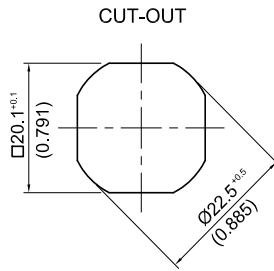
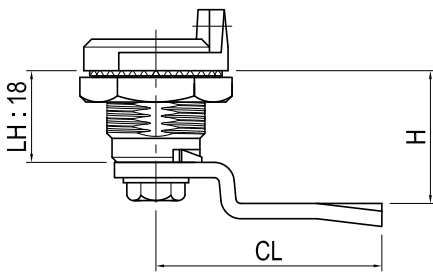




# SEALABLE QUARTER TURN



## FEATURES:

- IP65 rated
- Reduced installation time
- Fully assembled
- Multiple key options available (see table)

## DIMENSIONS:

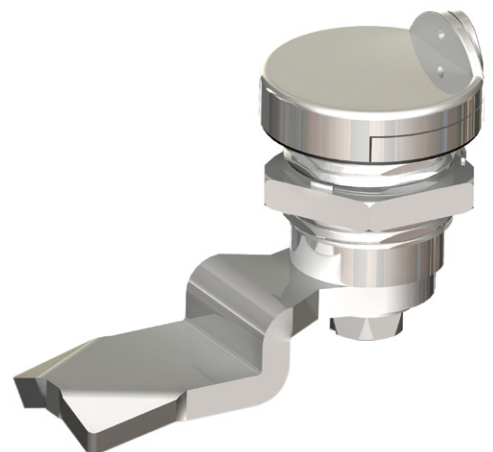
Housing            Length = 18mm  
Escutcheon = 29mm

## MATERIAL & FINISH:

Housing            Zinc die, Chrome plated  
Insert                Zinc die, Chrome plated  
Cam                  Mild steel, Zinc plated

## CAM DIMENSIONS:

Other variations available on request  
Refer to [page 1-14](#) when ordering



Convert to compression style with [PI5124](#) (page 2-14)

DRIVE STYLE	PART NUMBER
8mm Square	MS705-3A-4
8mm Square with slot	MS705-3A-4A
Screwdriver slot (2x4)	MS705-3A-8

\* CAM ordered separately