

# SELECTLOK®



## QUICK REFERENCE GUIDE

# Truck and Transport Manufacturers

### QLD | NT

Laurel Nilsen  
0401 989 235

[lnilsen@selectlok.com.au](mailto:lnilsen@selectlok.com.au)

### NSW | ACT

Daniel Korman  
0401 989 000

[dkorman@selectlok.com.au](mailto:dkorman@selectlok.com.au)

### VIC | TAS

Justin Newitt  
0416 656 695

[jnewitt@selectlok.com.au](mailto:jnewitt@selectlok.com.au)

### WA | SA

Andrena Winning  
0423 569 543

[awinning@selectlok.com.au](mailto:awinning@selectlok.com.au)

## HINGES



### WELD ON HINGE

PART NO. (Refer to table)  
BOX QTY: Sold individually

- ▶ For weld on application
- ▶ With or without grease nipple
- ▶ Brass pin, brass bushing

MATERIAL	AVAILABLE LENGTHS (mm)	PART NUMBER
Mild Steel (No Nipple)	60   80   100   120	WOH-##-S
Mild Steel	60   80   100   120   150   200	WOH-##-S01
Aluminium	60   80   100   120	WOH-##-A
Stainless Steel 304	60   80   100   120	WOH-##-SS



### TILA ALUMINIUM PROFILE HINGE

PART NO. (Refer to table)

- ▶ Maintenance Free
- ▶ Hydrolysis and bacteria resistant
- ▶ Pre-drilled holes (4mm dia with 100mm int.) 20mm (w) mounting face
- ▶ Aluminium AlMgSi 0.5 anodised
- ▶ Polyurethane elastomer E6 EV1

LENGTH	HINGE WEIGHT	TEMP RANGE	PART NO.
1400mm	1.60kg per hinge	-40°C to +80°C	631214
1800mm	2.05kg per hinge	-40°C to +80°C	631218
2200mm	2.50kg per hinge	-40°C to +80°C	631222
2400mm	2.75kg per hinge	-40°C to +80°C	631224
2700mm	3.10kg per hinge	-40°C to +80°C	631227

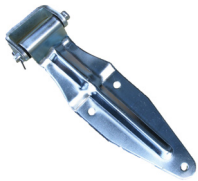


### PIANO HINGE

BOX QTY: 10

- ▶ Galvabond Zero spangle galvabond with brass pin
- ▶ Stainless Stainless steel 304 with stainless pin
- ▶ Available in various LxW or pre-drilled (pre-drilled only available in select sizing)

MATERIAL	AVAILABLE SIZES (mm)	PART NO.
Galvabond	32   38   50 x 1800mm	HIP##
Stainless Steel	32   38   50 x 1800mm & 57 x 2200mm	HIP##-SS



### 315MM REAR DOOR LEAF HINGE

PART NO. 60032-KIT1  
PART NO. 60032-KIT2 (Offset butt)

- ▶ 315mm (L) x 38mm (H)
- ▶ Supplied with bracket, bolts and nuts
- ▶ Mild steel, zinc plated



### 332MM REAR DOOR LEAF HINGE

PART NO. 031000

- ▶ 332mm (L) x 39mm (H)
- ▶ Supplied with bracket, bolts and nuts
- ▶ Mild steel, zinc plated



### STAINLESS STEEL 304 BUTT HINGES

PART NO. HIB75500SS (75mm x 49mm)  
PART NO. HIB100752SS (100mm x 75mm)

- ▶ Ball bearings to aid movement (100mm x 75mm only)



### WELD ON BULLET HINGE

PART NO. P3235

- ▶ 100mm length
- ▶ Mild steel
- ▶ Refer to our datasheet online for exact dimensions



### 187MM FLAT DOOR HINGE

PART NO. 113020-S-R (Right)  
PART NO. 113020-S-L (Left)

- ▶ RH or LH available
- ▶ Polished stainless steel 304 with greasable pin



### 148MM FLAT DOOR HINGE

PART NO. 113030-S-R (Right)  
PART NO. 113030-S-L (Left)

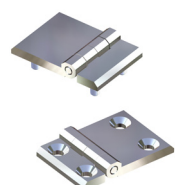
- ▶ RH or LH available
- ▶ Polished stainless steel 304 with greasable pin



### PEDESTAL HINGE

PART NO. 101-0145 (104mm x 66mm "T")  
PART NO. 101-0168 (54mm x 40mm)

- ▶ Rear fixing M6 studs
- ▶ Zinc die cast, powder coated black, stainless steel pin



### SCREW ON HINGE

PART NO. Contact us for availability of different sizes, colours or fixing options

- ▶ Available in black or chrome
- ▶ Available in front or rear fixing
- ▶ Available in sizes from 40mm ~ 90mm

## BALL BEARING DRAWER SLIDES



### DRAWER SLIDES

PART NO. (Refer to table)  
BOX QTY: Sold in Pairs

- ▶ Available in locking and non-locking variants
- ▶ Available in three different load ratings
- ▶ Available in range of ext. lengths (subject to availability, locking tab adds +25mm to noted length)
- ▶ Durable damping system
- ▶ Note: does not come with fixing hardware

LOAD RATING	EXTENDED LENGTH (mm)	FEATURES	PART NO.
45kg Soft Closing / Light Duty	250mm ~ 600mm (L) 45 mm (H) 12.7mm (W)	Lever disconnect	3M52-###
125kg Medium Duty	350mm ~ 1000mm (L) 53 mm (H) 18.7mm (W)	Lever disconnect	3053-###   -L
227kg Heavy Duty	400mm ~ 1800mm (L) 75.3 mm (H) 19.5mm (W)	No lever disconnect	3076-####   -L

## HEAVY-DUTY GAS STRUTS



### GAS STRUTS

BOX QTY: 50 (Can be purchased individually)

Our high-quality gas struts are available in extended lengths from 195mm to 920mm that provide mechanical assistance for lifting and supporting various trailer components.

- ▶ Available in different shaft widths, based roughly on extended length
- ▶ Various pressures to match the weight requirements of your strut
- ▶ Plastic quick-fit ends on 6mm and 8mm shafts (Steel ends available), steel ends on 10mm and 12mm shafts (additional strut ends and brackets available - sold separately)
- ▶ QPQ Coating on shaft increases protection from corrosion, chipping or dust

EXT. LENGTH	SHAFT WIDTH	PRESSURE
195mm ~ 900mm	6mm   8mm   10mm   12mm	Up to 1700 newtons (N)

## LOCKS AND HANDLES



### POLYAMIDE D-PULL HANDLE

PART NO. DHPA20  
BOX QTY: 100

- ▶ Made from high-quality polyamide
- ▶ Suitable for outdoor applications
- ▶ Mounting for M6 hex bolts

### COMPRESSION HANDLE (LRG & SML)

PART NO. (Refer to table)  
BOX QTY: 36 (Sold individually)



- ▶ Bracket: Mild steel, zinc plated / Cam: Zinc
- ▶ Grip range varies - contact your Selectlok representative
- ▶ Other finishes & grip ranges avail. - contact us for more

HANDLE SIZE	PART NUMBER
Chrome Plated (Large)	10207-CH510
Black Powder Coat (Large)	10207-CH510-BLK
Chrome Plated (Small)	10208-CH510
Black Powder Coat (Small)	10208-CH510-BLK



### D-PULL HANDLE

PART NO. LS505 (Polypropylene)  
BOX QTY: 100

- ▶ Made from polypropylene



### DROP CHEST HANDLE

PART NO. 196520-S

- ▶ Stainless steel 304
- ▶ 90mm (BL) x 50mm (BW) x 115mm (HL)



### PADDLE HANDLE (SS-304 DISH)

PART NO. (Refer to table)

- ▶ 109mm (W) x 139.5mm (L)
- ▶ Key lockable (multiple codes available)

LOCKING STYLE	PART NUMBER
Slam Cam (Single-Point)	10409
Rod Control (Multi-Point)	10411

## LOCKS AND HANDLES



### V3 MIDNIGHT & V3 MINI WHALE TAIL HANDLE

BOX QTY: 16 (Can be purchased individually)

- ▶ Available in Black & Chrome
- ▶ MINI version is 30% smaller than full-sized
- ▶ Also available in half-euro profile key cylinder
- ▶ IP65 rated, zinc die cast, stainless steel main shaft
- ▶ Config. as single (adj. roller cam) or multi-point locking
- ▶ 12V & 24V central locking kits available (sold separately)

VER.	HANDLE SIZE	PART NUMBER
Chrome	V3 Midnight Full-Size WT	10506M-SK#-ZCC-R
Black	V3 Midnight Full-Size WT	10506M-SK#-ZBB-R
Chrome	V3 Midnight MINI WT	10507M-SK#-ZCC-R
Black	V3 Midnight MINI WT	10507M-SK#-ZBB-R
12V CL	Suits all V3 & V3 MINI Ver	10506-CL-# *L/R
24V CL	Suits all V3 & V3 MINI Ver	10506-CL-#-24V *L/R

### ECLIPSE COMPRESSION FOLDING-T PART NO. FTZB001-CH751



- ▶ 180° handle rotation
- ▶ 4mm compression action
- ▶ Keyed CH751
- ▶ Adjustable roller cam (12~60mm)
- ▶ Suits single and multi-point locking
- ▶ Dish: PA6+GF30 Handle: P/C zinc alloy, blk Shaft: Stainless steel 304

## CAMS AND MULTI-POINT LOCKING



### 8MM LOCKING RODS

BOX QTY: 50

(Can be purchased individually)

MATERIAL	AVAIL. SIZES	ROLLER	PART NO.
Mild Steel	600mm ~ 1200mm	No	ROD###E
Mild Steel	600mm ~ 1200mm	Yes	ROD###R
SS-304	600mm ~ 1200mm	Yes	ROD###RSS



### ROD SLAM CATCH

PART NO. 2-563

- ▶ Suits 8mm ~ 10mm round rods
- ▶ Zinc die-cast, zinc plated



### NYLON CONNECT CLIP (FOR 8MM RODS)

PART NO. RG008



### ECONOMY FOLDING T-HANDLE

BOX QTY: 36 (Can be purchased individually)

- ▶ Chrome dish: Stainless steel 304, chrome plated
- ▶ Black dish: Mild steel, black powder coated
- ▶ Handle: Zinc die-cast, chrome plated
- ▶ Suits single and multi-point locking
- ▶ IP65 with dust cap (sold separately)

COLOUR	KEYED & CAM	PART NUMBER
Chrome (SS-304)	CH510, Flat	10502-CH510
Black (Mild Steel)	CH510, Flat	10502-CH510-BLK
Black (Mild Steel)	001, Bent (+9mm)	10502-001-BLK



### SELECTLOK HEAVY-DUTY FOLDING T-HANDLE, IP65 RATED

BOX QTY: (Can be purchased individually)

- ▶ Dish: Stainless steel 304, mirror finish
- ▶ Handle: Zinc die-cast, chrome plated
- ▶ Suits single and multi-point locking
- ▶ IP65 with dust cap (sold separately)
- ▶ Nyloc nuts supplied

CAM	FIXING TYPE	PART NUMBER
Adj. Flat	M5 Studs, Rear Fixing	10502-CH510-S-N
Adj. Roller	M5 Studs, Rear Fixing	10502-CH510-S-N-R



### ROD ADAPTER (FOR 8MM RODS)

PART NO. RODADAPT

- ▶ Available in mild steel and stainless steel 304



### ROLLER ATTACHMENT (FOR 8MM RODS)

PART NO. RG007

- ▶ Zinc die-cast, chrome plated and polyamide

### POLYAMIDE ROD GUIDES (FOR 8MM LOCKING RODS)

PART NO. (Refer to table)



DOOR RETURN HEIGHT	PART NO.
20mm (A) x 32mm (h)	P3355-02
26mm (A) x 38mm (h)	P3355-01
28mm (A) x 40mm (h)	200-3626.51-0000



## CAMS AND MULTI-POINT LOCKING

### ADJUSTABLE CAMS

PART NO. (Refer to table)



- ▶ Suits SQ 8mm shaft
- ▶ **Single:** 79mm (L), **3-Point:** 69mm (L)

TYPE	MATERIAL	PART NUMBER
Single	Zinc Die-Cast, Zinc Plated	1000-1586
3-Point w/o Adapters	Mild Steel, Zinc Plated OR SS-304	1000-1588
3-Point w/ Adapters	Mild Steel, Zinc Plated OR SS-304	1000-1587
3-Point Roller w/ Adapters	Cam: Zinc Die-Cast Adapter: Mild Steel Both: Zinc Plated Roller: Polyamide	1000-1587-RR



### FIXED OFFSET (H=) CAMS

PART NO. (Refer to table)

- ▶ With or without stopper
- ▶ Stainless and 3-point avail. on request
- ▶ 45mm (L), other lengths avail. on request

OFFSET (H=) *FLAT = 18mm	STOPPER	PART NO.
2mm ~ 55mm (Contact Us)	Yes	MCAM-##
4mm ~ 40mm (Contact Us)	No	XCAM-##
Adj. Roller Cam (H20 ~ H25)	Yes	100-9755

## TRANSPORT HARDWARE

### OVERCENTRE FASTENER AND HOOK

PART NO. (Refer to table)

- ▶ Please consult website for exact product specifications
- ▶ Hook and fastener sold separately



MATERIAL	SIZE	LATCH PART NO.	HOOK PART NO.
Mild Steel, Zinc	Small	92106	92106-1
Mild Steel, Zinc	Medium	92105	92105-1
Mild Steel, Zinc	Large	92104	92104-1
Stainless Steel 304	Small	92106SS	92106-1SS
Stainless Steel 304	Medium	92105SS	92105-1SS
Stainless Steel 304	Large	92104SS	92104-1SS



### TOGGLE FASTENER AND HOOK

PART NO. (Refer to table)

- ▶ Please consult website for exact product specifications
- ▶ Hook and fastener sold separately

MATERIAL	LATCH PART NO.	HOOK PART NO.
Mild Steel, Zinc	147050	147054
Stainless Steel 304	147050	147054-S



### ANTILUCE FASTENERS

BOX QTY: Can be purchased individually

- ▶ Mild steel, zinc plated

THREAD LENGTH OR BOSS	PART NO.
Weld On - 13mm Boss Length	9777
Weld On - Without Boss	9777-NS
Bolt On - 25mm Thread Length	9716-25
Bolt On - 50mm Thread Length	9716-50



### PLASTIC DOOR RETAINER

PART NO. 631800

- ▶ White plastic with SS-304 spring
- ▶ 4x longitudinal fixing holes (10 x 5mm)
- ▶ 65mm (L) x 29mm (W) x 44.5mm (H)



### LASHING RING - 120° OPENING

PART NO. 9193

- ▶ Mild steel, zinc plated
- ▶ Max load: 5,000N at 5mm/min



**SPRING BOLTS**  
PART NO. (Refer to table)

- ▶ 120° opening

MATERIAL	AVAILABLE SIZE	P/N #
Stainless Steel 304	123mm (L) x 10mm (D)	152103-S
Mild Steel, Zinc Plated	132mm (L) x 9.5mm (D)	9535
Mild Steel, Zinc Plated	153mm (L) x 12mm (D)	9156
Stainless Steel 304	166mm (L) x 12mm (D)	9156-SS
Mild Steel, Zinc Plated	213mm (L) x 12mm (D)	152030
Mild Steel, Zinc Plated	213mm (L) x 16mm (D)	152020



**RECESSED HANDLE**  
PART NO. (Refer to table)

- ▶ Stainless steel 304
- ▶ 350mm x 154mm

DEPTH	PART NUMBER
27mm	FEM16001-25-1
30.5mm	FEM16001-29-1



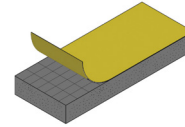
**CAM LOCK KIT (SUITS Ø27MM TUBING)**  
PART NO. 010300

- ▶ Mild steel, zinc plated
- ▶ 27mm (OD) x ### (TL) x 365mm (HL)

**RUBBER SEAL AND FOAM TAPES**

**CLOSED CELL FOAM TAPES**  
(AVAILABLE IN EITHER EPDM & PVC NITRILE)

PART NO. (Refer to table)  
BOX QTY: Varies based on the roll: material, width & thickness



MATERIAL	AVAILABLE WIDTHS	AVAILABLE THICKNESS'	PART NO.
PVC Nitrile	10mm ~ 25mm (A)	3mm ~ 9mm (B)	NITFTAxB
EPDM	9mm ~ 48mm (A)	3mm ~ 12mm (B)	EPDMFTAxB



**RUBBER BULL NOSE**

PART NO. RSB256  
BOX QTY: 50m coil

- ▶ Profile: 25mm x 6mm
- ▶ Subject to availability and/or leadtimes



**PVC EDGE PROTECTION**  
**MEDIUM PROFILE**

PART NO. PACK-10802-07 (7m roll)  
PART NO. 1011-10802 (100m roll)  
BOX QTY: 7m pack **or** 1 x 100m roll (box)

- ▶ Grip range: 1.0 ~ 2.0mm



**RUBBER PINCHWELD - SMALL**  
**SIDE MOUNT BUBBLE**

PART NO. 1011-10212  
BOX QTY: 1 x 100m roll

- ▶ Grip range: 1.0 ~ 2.0mm



**RUBBER PINCHWELD - SMALL**  
**TOP MOUNT BUBBLE**

PART NO. PACK-110-07 (7m roll)  
PART NO. 1011-110 (50m roll)  
BOX QTY: 7m pack **or** 2 x 50m rolls (box)

- ▶ Grip range: 1.0 ~ 2.0mm



**PVC EDGE PROTECTION**  
**SMALL PROFILE**

PART NO. PACK-10801-07 (7m roll)  
PART NO. 1011-10801 (100m roll)  
BOX QTY: 7m pack **or** 1 x 100m roll (box)

- ▶ Grip range: 0.8 ~ 1.5mm



**PVC EDGE PROTECTION**  
**LARGE PROFILE**

PART NO. PACK-10803-07 (7m roll)  
PART NO. 1011-10803 (100m roll)  
BOX QTY: 7m pack **or** 1 x 100m roll (box)

- ▶ Grip range: 1.0 ~ 4.0mm



**RUBBER PINCHWELD - SMALL**  
**SIDE MOUNT BUBBLE**

PART NO. PACK-109-07 (7m roll)  
PART NO. 1011-109 (50m roll)  
BOX QTY: 7m pack **or** 2 x 50m rolls (box)

- ▶ Grip range: 1.0 ~ 2.0mm



**RUBBER PINCHWELD - MEDIUM**  
**SIDE MOUNT BUBBLE**

PART NO. PACK-106-07 (7m roll)  
PART NO. 1011-106 (50m roll)  
BOX QTY: 7m pack **or** 2 x 50m rolls (box)

- ▶ Grip range: 1.0 ~ 2.5mm

## RUBBER SEAL AND FOAM TAPES



**RUBBER PINCHWELD - MEDIUM TOP MOUNT BUBBLE**  
PART NO. PACK-105-07 (7m roll)  
PART NO. 1011-105 (50m roll)  
BOX QTY: 7m pack **or** 2 x 50m rolls (box)

- ▶ Grip range: 1.0 ~ 3.0mm



**RUBBER PINCHWELD - LARGE SIDE MOUNT BUBBLE**  
PART NO. 1011-A3297  
BOX QTY: 2 x 50m rolls

- ▶ Grip range: 2.0mm



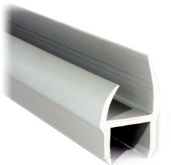
**RUBBER PINCHWELD - LARGE TOP MOUNT BUBBLE**  
PART NO. 1011-A1030-E2583  
BOX QTY: 2 x 50m rolls

- ▶ Grip range: 4.0 ~ 6.0mm



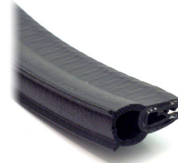
**TRUCK DOOR RUBBER CORNER TAB SEALS**  
PART NO. P2627  
BOX QTY: 100

- ▶ PVC, grey
- ▶ 80mm (L) x 20mm (W) x 2mm (T)



**TRUCK DOOR RUBBER REAR "H" SEAL**  
PART NO. P-200-21  
BUNDLE QTY: 50m (10 x 5m Lengths)

- ▶ PVC, grey
- ▶ 21mm wide "H" Seal, 3mm thick



**RUBBER PINCHWELD - MEDIUM TOP MOUNT BUBBLE (FOR CHECKERPLATE)**  
PART NO. 1011-105-C  
BOX QTY: 1 x 100m roll

- ▶ Grip range: 2.5 ~ 3.5mm



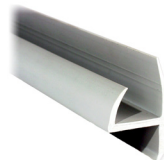
**RUBBER PINCHWELD - LARGE TOP MOUNT BUBBLE**  
PART NO. 1011-A2516-4  
BOX QTY: 2 x 50m rolls

- ▶ Grip range: 2.5 ~ 4.0mm



**SELF-ADHESIVE EPDM RUBBER TOP MOUNT, 3M ADHESIVE**  
PART NO. 9187STS  
BOX QTY: 1 x 50m roll

- ▶ Profile: 16.7mm x 18mm



**TRUCK DOOR RUBBER REAR "J" SEAL**  
PART NO. 183020  
BUNDLE QTY: 50m (10 x 5m Lengths)

- ▶ PVC, grey
- ▶ 25mm wide "J" Seal, 3mm thick



**TRUCK DOOR RUBBER REFRIGERATION SEAL**  
PART NO. P-6081  
BUNDLE QTY: 40m (8 x 5m Lengths)

- ▶ PVC, grey
- ▶ 84mm wide "H" Seal, 3mm thick

## MISCELLANEOUS



**UTILITY FLUSH LOCK KIT**  
PART NO. 08-01KIT-SEL

- ▶ 245mm height to suit 25mm profile
- ▶ With overturning handle & safety lever

- ▶ Complete kit comprising:
  - 1 x LH rear lock + matching corner profile
  - 1 x RH rear lock + matching corner profile
  - 1 x LH front side lock + mounting fork
  - 1 x LH front side lock + mounting fork



**EMERGENCY INTERNAL HANDLE**  
PART NO. P2535

- ▶ Fully adjustable
- ▶ Push button action
- ▶ Suits 8mm square shaft
- ▶ Suitable for use with swing handles
- ▶ Multi-point locking compatible



**PANEL LOCK**  
PART NO. MS866-8

- ▶ Slam shut design
- ▶ Stainless steel 304
- ▶ 56mm (L) x 42mm (W) x 25.2mm (D)

For more information on price and availability, drawings or technical data please consult your local Selectlok Account Manager, or visit [www.selectlok.com.au](http://www.selectlok.com.au)

Selectlok began as a small family business in the suburbs of Preston, Victoria in 1978. We now call Tullamarine, Victoria our home, with sales representatives across all of Australia servicing our clients needs.

We work directly with manufacturers to create innovative industrial hardware solutions, and are a driving force for creating ingenious solutions specifically for the Australian market.

Our in-house products and distributed ranges use only the highest quality manufacturing processes and materials. That's why we are trusted by the biggest manufacturers in Australia.



## HEAD OFFICE | CUSTOMER SERVICE

13 TREVI CRESCENT, TULLAMARINE, VIC 3043

TEL (03) 8318 4900

EMAIL SALES@SELECTLOK.COM.AU



DISCOVER MORE ONLINE

[www.selectlok.com.au](http://www.selectlok.com.au)