

SELECTLOK®



QUICK REFERENCE GUIDE

Marine Industries Manufacturers

QLD | NT

Laurel Nilsen
0401 989 235

lnilsen@selectlok.com.au

NSW | ACT

Daniel Korman
0401 989 000

dkorman@selectlok.com.au

VIC | TAS

Justin Newitt
0416 656 695

jnewitt@selectlok.com.au

WA | SA

Andrena Winning
0423 569 543

awinning@selectlok.com.au



Selectlok began as a small family business in the suburbs of Preston, Victoria in 1978. We now call Tullamarine, Victoria our home, with sales representatives across all of Australia servicing our clients needs.

We work directly with manufacturers to create innovative industrial hardware solutions, and are a driving force for creating ingenious solutions specifically for the Australian market.

Our in-house products and distributed ranges use only the highest quality manufacturing processes and materials. That's why we are trusted by the biggest manufacturers in Australia.



HEAD OFFICE | CUSTOMER SERVICE

13 TREVI CRESCENT, TULLAMARINE, VIC 3043

TEL (03) 8318 4900

EMAIL SALES@SELECTLOK.COM.AU



DISCOVER MORE ONLINE

www.selectlok.com.au



WELD ON HINGE WITH GREASE NIPPLE PART NO. (REFER TO TABLE)

- For weld on applications
- Brass pin, brass bushing

MATERIAL	AVAILABLE LENGTHS (mm)	PART NUMBER
ALUMINIUM	60 80 100 120	WOH-##-A
304 STAINLESS STEEL	60 80 100 120	WOH-##-SS



OVER CENTRE FASTENER AND HOOKS - 304 STAINLESS STEEL PART NO. (REFER TO TABLE)

- Please consult our website, for exact dimensions
- Hook and fastener sold separately



T HANDLE (NON LOCKING) PART NO. SEL-200-9374

- IP65 rated, 90° rotation
- 316 stainless steel
- Three-point cam included

SIZE	LATCH PART NUMBER	HOOK PART NUMBER
Small	92106SS	92106-1SS
Medium	92105SS	92105-1SS
Large	92104SS	92104-1SS



TOGGLE FASTENER AND HOOK PART NO. (REFER TO TABLE)

- Please consult our website, for exact dimensions
- Hook and fastener sold separately



CONCEALED CORNER HINGE PART NO. CL104

- Door thickness 1.5mm-2.3mm
- Zinc die cast housing with 304 stainless steel Pin

MATERIAL/FINISH	LATCH PART NUMBER	HOOK PART NUMBER
Stainless steel	147050S	147054-S



STAINLESS STEEL GAS STRUTS

PART NO. & BOX QTY: Contact us for more information

Our high-quality gas struts are available in a variety of lengths and pressures to provide mechanical assistance for lifting & supporting various trailer components.

- 316 grade stainless steel piston rod and cylinder
- Various pressures to match the weight requirements of your strut
- Plastic quick-fit ends
- ø8mm piston rod, ø18mm cylinder

SHAFT WIDTH	EXT. LENGTH	PRESSURE
8mm	310 510 610 810 (mm)	Up to 700 newtons (N)



TILA ALUMINIUM PROFILE HINGE PART NO. (REFER TO TABLE)

- Maintenance Free
- Hydrolysis and bacteria resistant
- Pre-drilled holes (4mm dia with 100mm intervals,) 20mm wide mounting face
- Aluminium profile - AlMgSi 0.5 anodised, E6 EV1, polyurethane elastomer profile

PART NO.	LENGTH	HINGE WEIGHT	TEMP RANGE
631218	1800mm	2.05kg per hinge	-40°C to +80°C
631222	2200mm	2.50kg per hinge	-40°C to +80°C
631224	2400mm	2.75kg per hinge	-40°C to +80°C
631227	2700mm	3.10kg per hinge	-40°C to +80°C



FLUSH PULL RING LATCH

PART NO. ABLU01B

BOX QTY: Sold individually



- ▶ Non-lockable, slam latch
- ▶ Suits panel thickness 1mm-6mm
- ▶ ABS plastic, nylon

FLUSH PULL RING LATCH - S/S 316

PART NO. ABTU01B

BOX QTY: Sold individually



- ▶ Key lockable, slam latch
- ▶ Suits panel thickness 1mm-10mm
- ▶ Polished marine grade - S/S 316

DROP CHEST HANDLE

PART NO. 196520-S

BOX QTY: Sold individually



- ▶ 304 grade stainless steel
- ▶ 90 (BW) x 50 (BL) x 115 (HW) - mm

DROP CHEST RECESSED HANDLE

PART NO. H7151S

BOX QTY: Sold individually



- ▶ Polished, 304 grade stainless steel
- ▶ 161mm (BW) x 107mm (BL)



V3 MIDNIGHT MAX & V3 MIDNIGHT MAX MINI WHALE TAIL HANDLES

PART NO. (REFER TO TABLE)

BOX QTY: 16 (Can be purchased individually)

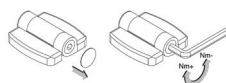
- ▶ IP65 rated, zinc die cast
- ▶ Available in Black & Chrome
- ▶ Also available in half-euro profile key cylinder
- ▶ MINI version is 30% smaller than full-sized
- ▶ Compatible with single (adjustable roller cam) or multi-point locking

COLOUR	HANDLE SIZE	PART NUMBER
Chrome	V3 Midnight MAX	10506M-SK#-ZCC-R
Black	Full-Sized Whale Tail	10506M-SK#-ZBB-R
Chrome	V3 Midnight MAX	10507M-SK#-ZCC-R
Black	MINI Whale Tail	10507M-SK#-ZBB-R

DIRAK TORQUE BUTT HINGE

PART NO. 703-9011.00-00000

Contact us for more information



- ▶ 270° opening angle
- ▶ RH / LH application
- ▶ 63mm (L) x 57.6mm (W)
- ▶ **Hinge and covers:** PA, black
- ▶ **Pin:** stainless steel
- ▶ Installation with M6 nuts/bolts
- ▶ Continuously adjustable torque of 0-5Nm. The adjustment of the torque is made with a 4mm allen key in the hinge shaft
- ▶ Doors will remain at open position
- ▶ Usable as coverstay for light-duty application



FOLDING T PULL HANDLE - STAINLESS STEEL

PART NO. 10502-PULL-N

BOX QTY: Sold individually

- ▶ **Dish:** 304 stainless steel, **Handle:** 304 stainless steel, **Bracket:** 304 stainless steel
- ▶ Mirror finish
- ▶ 110mm (H) x 130mm (W)
- ▶ Pull handle - no cam
- ▶ IP65 rated



PADDLE HANDLE

PART NO. (REFER TO TABLE)

BOX QTY: Sold individually

- ▶ **Handle & dish:** 304 stainless steel
- ▶ **Cam & rod:** mild steel, zinc plated
- ▶ Available in variety of key codes
- ▶ Available as single (adjustable roller cam) or multi-point locking

LOCKING	HANDLE SIZE	PART NUMBER
Single	109mm x 139.5mm	10409-CH510
Multi		10411-CH510



PANEL LOCK

PART NO. MS866-8

BOX QTY: Sold individually

- ▶ Slam shut design
- ▶ 56mm (L) 42mm (W) 25.2 mm (D)
- ▶ Polished 304 grade stainless steel



166MM S/S SPRING BOLT

PART NO. 9156-SS

BOX QTY: 50

(Also purchased individually)

- ▶ 316 stainless steel
- ▶ 120 degree opening
- ▶ 166mm (L) x 12mm (D)



PLASTIC DOOR RETAINER

PART NO. 631800

BOX QTY: Sold individually

- ▶ White plastic with SS spring
- ▶ 4x longitudinal fixing holes (10x5mm)
- ▶ 65mm (L) x 29mm (W) x 44.5mm (H)



187MM FLAT DOOR HINGE

PART NO. 113020-S-R / L

BOX QTY: Sold individually

- ▶ Greasable pin
- ▶ RH or LH available
- ▶ 304 grade stainless steel



DUAL PADLOCKABLE WING KNOB

PART NO. ALWU06A-2-316

BOX QTY: Sold individually

- ▶ Cam included (H= 25mm)
- ▶ Suits up to a 8mm padlock
- ▶ Marine grade stainless steel 316



POLYAMIDE D-PULL HANDLE

PART NO. DHPA20

BOX QTY: Sold individually

- ▶ 137mm (W) 37mm (H)
- ▶ Mounting for M6 hex bolts
- ▶ Suitable for outdoor applications



38MM BUTT HINGE

PART NO. HIB3725SS

- ▶ 304 grade stainless steel
- ▶ 38mm (L) x 25mm (W) x 1mm (MT)



PIANO HINGE

BOX QTY: 10

- ▶ 304 grade stainless with stainless pin
- ▶ Available in variety of L & W or pre-drilled (pre-drilled only available in select sizing)



HEAVY DUTY COVER STAY

PART NO. M179-44-001

BOX QTY: Sold individually

- ▶ Auto lock to keep door open
- ▶ 304 grade stainless steel
- ▶ 230mm (L)

MATERIAL	AVAILABLE SIZES (MM)	P/No.
Stainless	32/38/50 x 1800 & 57 x 2200	HIP##-SS

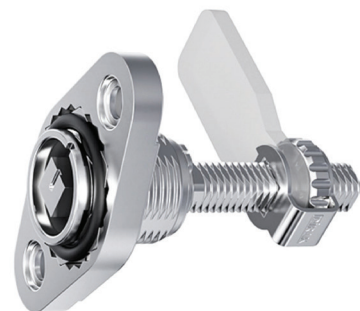


60MM SPRING LOADED BUTT HINGE

PART NO. CL253-6

BOX QTY: Sold individually

- ▶ For self-closing applications
- ▶ Suitable for LH or RH applications
- ▶ 304 grade stainless steel
- ▶ 60mm (L) x 40mm (W) x 1.5mm (MT)



DIRAK FLUSH-MOUNT ADJ. COMPRESSION LATCH

PART NO. & BOX QTY: Contact us for more information

- ▶ Available in multiple inserts, LH or RH closing available
- ▶ Available in two housing lengths: 28mm OR 37mm
- ▶ Visual indicator of opened/closed position
- ▶ Compression 6mm, cam adjustable ± 14 mm (GL28) and ± 9 mm (GL37)
- ▶ IP69K to DIN EN 40050, vibration-proof
- ▶ AISI 316 grade stainless steel with NBR o-ring



DIRAK SMALL OVAL WINDOW

PART NO. 251-9101.00-00000

Contact us for more information

- ▶ 140mm (W) x 280mm (L) x 16mm (D)
- ▶ **Window:** polycarbonate PC
- ▶ **Self-adhesive seal:** EPDM cell sponge rubber
- ▶ 4x holes for flat head screw M5



**SELF-ADHESIVE RUBBER, TOP MOUNT
3M ADHESIVE**

PART NO. 9187STS

BOX QTY: 1 x 50m roll

► Profile: 18mm x 18mm

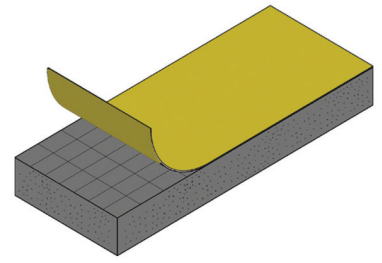


**RUBBER CLOSED CELL
PVC NITRILE FOAM**

PART NO. NITFT25X6

BOX QTY: 12 x 12.5m rolls

► Profile: 25mm x 6mm



**RUBBER SELF ADHESIVE
EPDM FOAM TAPE**

PART NO. EPDMFT24x6

BOX QTY: 12 x 12m rolls

► Profile: 24mm x 6mm



**RUBBER PINCHWELD, SIDE MOUNT
MEDIUM BUBBLE**

PART NO. 1011-106

BOX QTY: 2 x 50m rolls

► Grip Range: 2.0mm



**RUBBER PINCHWELD, TOP MOUNT
MEDIUM BUBBLE**

PART NO. 1011-105

BOX QTY: 2 x 50m rolls

► Grip Range: 1.0 - 2.5mm



**RUBBER EDGE PROTECTION
MEDIUM PROFILE**

PART NO. 1011-10802

BOX QTY: 1 x 100m roll

► Grip Range: 1.0 - 2.0mm

WHY SELECTLOK RUBBER?

Don't settle for less. Great rubber will leave a long-lasting impression.

Selectlok rubber products are made from "ethylene propylene diene monomer", also known as EPDM. This extremely versatile synthetic rubber is commonly used for sealing found in outdoor environments because of its hardy and highly resistant properties. It's also lightweight, compressible and easy to die cut making it a cost-effective rubber material for manufacturing.

FEATURES:

- Withstands max temperatures within the range of -59°C to +149°C
- Resistant to water, air, weather, ozone, and heat
- High silica content gives the rubber better tear strength and fatigue resistance
- Creates 3 points of contact for superior sealing

Please consult our website or Section 10 in our main catalogue for drawings and measurements.