

SELECTLOK®



QUICK REFERENCE GUIDE

Ag 'n' Rural Manufacturers

QLD | NT

Laurel Nilsen
0401 989 235

lnilsen@selectlok.com.au

NSW | ACT

Daniel Korman
0401 989 000

dkorman@selectlok.com.au

VIC | TAS

Justin Newitt
0416 656 695

jnewitt@selectlok.com.au

WA | SA

Andrena Winning
0423 569 543

awinning@selectlok.com.au



Selectlok began as a small family business in the suburbs of Preston, Victoria in 1978. We now call Tullamarine, Victoria our home, with sales representatives across all of Australia servicing our clients needs.

We work directly with manufacturers to create innovative industrial hardware solutions, and are a driving force for creating ingenious solutions specifically for the Australian market.

Our in-house products and distributed ranges use only the highest quality manufacturing processes and materials. That's why we are trusted by the biggest manufacturers in Australia.



HEAD OFFICE | CUSTOMER SERVICE

13 TREVI CRESCENT, TULLAMARINE, VIC 3043

TEL (03) 8318 4900

EMAIL SALES@SELECTLOK.COM.AU



DISCOVER MORE ONLINE

www.selectlok.com.au



WELD ON HINGE
 PART NO. (REFER TO TABLE)
 BOX QTY: Sold individually

- For weld on applications
- With or without grease nipple
- Brass pin, brass bushing

MATERIAL	AVAILABLE LENGTHS (mm)	PART NUMBER
MILD STEEL (NO NIPPLE)	60 80 100 120	WOH-##-S
MILD STEEL	60 80 100 120 150 200	WOH-##-S01
ALUMINIUM	60 80 100 120	WOH-##-A
304 STAINLESS STEEL	60 80 100 120	WOH-##-SS



**WELD ON HINGE
 BULLET HINGE**
 PART NO. (REFER TO TABLE)
 BOX QTY: Sold individually

- For weld on applications
- With or without brass spacer

MATERIAL	SIZES (mm)	PART NUMBER
MILD STEEL	100 (L) x 20 (D)	P3235
MILD STEEL, BRASS SPACER	60 (L) x 10 (D)	CL270-4
MILD STEEL, BRASS SPACER	120 (L) x 14 (D)	CL270-3



GAS STRUTS
 BOX QTY: 50 (Can be purchased individually)

Our high-quality gas struts are available in extended lengths from 195mm to 920mm that provide mechanical assistance for lifting and supporting various trailer components.

- Available in different shaft widths, based roughly on extended length
- Various pressures to match the weight requirements of your strut
- Plastic quick-fit ends on 6mm and 8mm shafts (Steel ends available), Steel ends on 10mm and 12mm shafts.
- QPQ Coating on shaft increases protection from corrosion, chipping or dust

EXT. LENGTH	SHAFT WIDTH	PRESSURE
195 - 920mm	6mm 8mm 10mm 12mm	Up to 1700 newtons (N)



DRAWER SLIDES
 PART NO. (PLEASE CONTACT US)
 BOX QTY: Sold in pairs

- Available in locking and non-locking variants
- Available in different load ratings, based on extended length (locking adds 25mm)
- Note: does not come with fixing screws
- Durable damping system

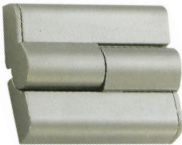
LOAD RATING	EXT. LENGTH	FEATURES
45kg Soft Closing / Light Duty	300mm - 600mm (L) 45mm (H) 12.7mm (W)	Leaver Disconnect
125kg Medium Duty	350mm - 1000mm (L) 53mm (H) 18.7mm (W)	Leaver Disconnect
227kg Heavy Duty	400mm - 1800mm (L) 75.3mm (H) 19.5mm (W)	No Leaver Disconnect



TOGGLE FASTENER AND HOOK
 PART NO. (REFER TO TABLE)

- Please consult our website, for exact dimensions
- Hook and fastener sold separately

MATERIAL/FINISH	LATCH PART NUMBER	HOOK PART NUMBER
Steel	147050	147054
Stainless steel	147050S	147054-S



TORQUE BUTT HINGE
 PART NO. CL299-1-Z

- 90 degree rotation
- 60mm (L) x 48mm (D)
- Zinc die/nanometer plating



LOCKABLE L HANDLE

PART NO. ABLU01B

BOX QTY: Sold individually

- ▶ Rear fixing
- ▶ 180° rotation, LH or RH application
- ▶ Cam sold separately



LOCKABLE T HANDLE

PART NO. ABTU01B

BOX QTY: Sold individually

- ▶ Rear fixing
- ▶ 180° rotation, LH or RH application
- ▶ Cam sold separately



SINGLE POINT CAM

PART NO. 1000-1586

BOX QTY: Sold individually

- ▶ Suits 8mm square shaft
- ▶ Grub screw fastening



INTERNAL HANDLE (L & T HANDLES)

PART NO. 1000-1592

BOX QTY: Sold individually

- ▶ Suits 8mm square shaft



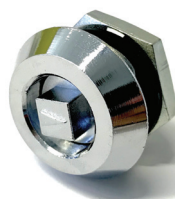
V3 MIDNIGHT MAX & V3 MIDNIGHT MAX MINI WHALE TAIL HANDLES

PART NO. (REFER TO TABLE)

BOX QTY: 16 (Can be purchased individually)

- ▶ IP65 rated
- ▶ Available in Black & Chrome
- ▶ Also available in half-euro profile key cylinder
- ▶ MINI version is 30% smaller than full-sized
- ▶ Compatible with single (adjustable roller cam) or multi-point locking

COLOUR	HANDLE SIZE	PART NUMBER
Chrome	V3 Midnight MAX	10506M-SK#-ZCC-R
Black	Full-Sized Whale Tail	10506M-SK#-ZBB-R
Chrome	V3 Midnight MAX	10507M-SK#-ZCC-R
Black	MINI Whale Tail	10507M-SK#-ZBB-R



QUARTER TURN LATCH (SPRING LOADED)

PART NO. SQ118-8-32

BOX QTY: Sold individually

- ▶ 8mm Square (other inserts available)
- ▶ 18.5mm (HL) 32mm (E)
- ▶ Cam sold separately



CAM WITH STOPPER

PART NO. MCAM-18

BOX QTY: Sold individually

- ▶ 45mm (L) 4mm (MT) 18mm (H)
- ▶ Multiple offsets (H) available

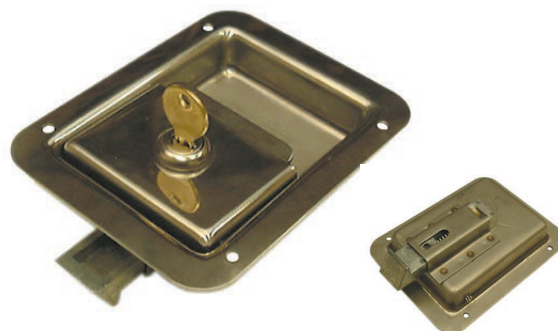


HEAVY DUTY FOLDING T HANDLE, IP65 RATED

PART NO. 10502-CH510-S-N

BOX QTY: 16 (Can be purchased individually)

- ▶ **Dish:** 304 stainless steel dish, **Handle:** zinc die cast, chrome plated, **Cam/Shaft:** mild steel, zinc plated
- ▶ Available with an adjustable roller cam
- ▶ Available with either threaded studs of bolt holes
- ▶ Suitable for single or multi-point locking
- ▶ IP65 rated (with dust cap fitted - sold separately)



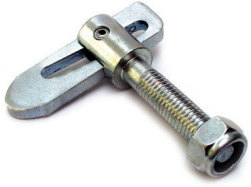
PADDLE HANDLE

PART NO. (REFER TO TABLE)

BOX QTY: Sold individually

- ▶ 304 stainless steel (handle & dish)
- ▶ Available in variety of key codes
- ▶ Available as single (adjustable roller cam) or multi-point locking

LOCKING	HANDLE SIZE	PART NUMBER
Single	109mm x 139.5mm	10409-CH510
Multi		10411-CH510



THREADED ANTILUCE

PART NO. 9716-25

BOX QTY: Sold individually

- ▶ 47mm (L) 80mm (W) 20 mm (TL)
- ▶ Also available in 45mm thread length (TL)
- ▶ Also available in weld-on options



153MM SPRING BOLT

PART NO. 9156

BOX QTY: 50

- ▶ Zinc plated, mild steel
- ▶ 120 degree opening
- ▶ 153mm (L) x 12mm (D)



LASHING RING

PART NO. 9193

BOX QTY: 60

- ▶ Mild steel & Zinc plated
- ▶ 120 degree opening
- ▶ 95mm x 101mm x 25.5mm



POLYAMIDE D-PULL HANDLE

PART NO. DHPA20

BOX QTY: Sold individually

- ▶ 137mm (W) 37mm (H)
- ▶ Mounting for M6 hex bolts
- ▶ Suitable for outdoor applications

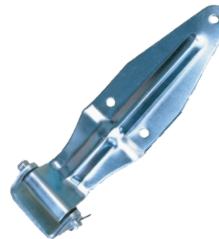


CAM LOCK KIT (Ø27MM TUBING)

PART NO. 010300

BOX QTY: Sold individually

- ▶ Mild steel & Zinc plated
- ▶ To suit 27mm OD tubing
- ▶ ##mm (TL) x 365mm (HL)



315MM REAR DOOR LEAF HINGE

PART NO. 60032-KIT1

BOX QTY: Sold individually

- ▶ 38mm (H) 315mm (L)
- ▶ Supplied with bracket, bolts and nuts
- ▶ Mild steel & Zinc plated



PLASTIC DOOR RETAINER

PART NO. 631800

BOX QTY: Sold individually

- ▶ White plastic with SS spring
- ▶ 4x longitudinal fixing holes (10x5mm)
- ▶ 65mm (L) x 29mm (W) x 44.5mm (H)



PIANO HINGE

BOX QTY: 10

- ▶ Zero spangle galvabond with brass pin
- ▶ 304 grade stainless with stainless pin
- ▶ Available in variety of L & W or pre-drilled (pre-drilled only available in select sizing)



COMPRESSION HANDLE (LARGE & SMALL)

PART NO. (REFER TO TABLE)

BOX QTY: 36 (Can be purchased individually)

- ▶ Bracket: Mild steel & Zinc plated / Cam: Zinc
- ▶ Grip range varies - contact your Selectlok representative
- ▶ Other finishes & grip ranges available - contact us for more

HANDLE FINISH	PART NUMBER
Chrome plated (Large)	10207-CH510
Black powder coat (Large)	10207A-CH510-BLK
Chrome plated (Small)	10208-CH510
Black powder coat (Small)	10208-CH510-BLK

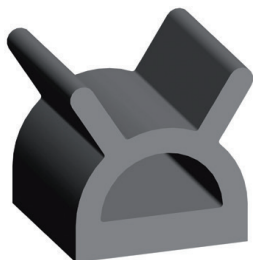
MATERIAL	AVAILABLE SIZES	P/N #
Galvabond	32/38/50 x 1800mm (Gal & SS)	HIP##
Stainless	57 x 2200mm (SS)	HIP##-SS



DIRAK BRIDGE HANDLE - STEEL TUBE Ø30MM

PART NO. & BOX QTY: Contact us for more information

- ▶ Steel tubes: steel, PVC with steel spring core
- ▶ Supports: PA, black
- ▶ Steel tube Ø30mm available in the following lengths: 266mm/366mm/466mm/566mm/766mm & 2500mm
- ▶ Supports available as end pieces, wall ends, center & LH/RH bent supports



**SELF-ADHESIVE RUBBER, TOP MOUNT
3M ADHESIVE**

PART NO. 9187STS

BOX QTY: 1 x 50m roll

► Profile: 18mm x 18mm



**RUBBER CLOSED CELL
PVC NITRILE FOAM**

PART NO. NITFT25X6

BOX QTY: 12 x 12.5m rolls

► Profile: 25mm x 6mm



**RUBBER EDGE PROTECTION
LARGE PROFILE**

PART NO. 1011-10803

BOX QTY: 1 x 100m roll

► Grip Range: 1.0 - 4.0mm



**RUBBER PINCHWELD, SIDE MOUNT
MEDIUM BUBBLE**

PART NO. 1011-106

BOX QTY: 2 x 50m rolls

► Grip Range: 2.0mm



**RUBBER PINCHWELD, TOP MOUNT
MEDIUM BUBBLE**

PART NO. 1011-105

BOX QTY: 2 x 50m rolls

► Grip Range: 1.0 - 2.5mm



**RUBBER SEALING, SIDE MOUNT
LARGE BUBBLE**

PART NO. 1011-A3297

BOX QTY: 2 x 50m rolls

► Grip Range: 2.0mm

WHY SELECTLOK RUBBER?

Don't settle for less. Great rubber will leave a long-lasting impression.

Selectlok rubber products are made from "ethylene propylene diene monomer", also known as EPDM. This extremely versatile synthetic rubber is commonly used for sealing found in outdoor environments because of its hardy and highly resistant properties. It's also lightweight, compressible and easy to die cut making it a cost-effective rubber material for manufacturing.

FEATURES:

- Withstands max temperatures within the range of -59°C to +149°C
- Resistant to water, air, weather, ozone, and heat
- High silica content gives the rubber better tear strength and fatigue resistance
- Creates 3 points of contact for superior sealing

Please consult our website or Section 10 in our main catalogue for drawings and measurements.