



EVOLUTION SERIES | SWITCH UP MODULAR SWING HANDLE (FSDT)

SELECTLOK®

EVOLUTION SERIES I SWITCH UP - MODULAR SWING HANDLES

WHY SWITCH UP?

As enclosure design evolves towards modularity and symmetrical door frame manufacturing, smarter and more adaptable hardware essential — and that's exactly what Selectlok's new Switch Up modular swing handle system, part of the Evolution Series, delivers — a bold leap forward in handle innovation, engineered to help

you stay one step ahead of emerging industry trends and recent updates to regulatory standards.

The Switch Up makes choosing, fitting, and replacing swing handles easier than ever. Offering a true one handle system that works across multiple door orientations, enclosure types and locking setups, enhancing reliability and flexibility. It streamlines production, reduces inventory complexity, cuts labour costs, and allows your business to adapt and scale with ease — all while keeping things simple and stress-free.

Thanks to its patented technology, the Switch Up system gives you the ability to adjust in-situ to meet evolving regulatory requirements or customer preferences. You can offer access to many of the industry's most popular locking options — without compromising on affordability or choice. Simply Switch Up the INSERT to deliver the desired locking solution, eliminating the need to replace the entire handle.

Whether you're designing for compact spaces, symmetrical frames, or simply seeking a cleaner, more cohesive solution, the Evolution Series, Switch Up swing handle range delivers performance, flexibility, and style in one sleek, modular package.

"It's not just about convenience — it's about building smarter from the start."



"Because trimming shafts with an angle grinder shouldn't become a workplace tradition."

SMARTER BY DESIGN: The Short-Shaft Breakthrough

At the heart of all Evolution Series handles is our proprietary short cam-shaft design — an innovative solution to a common real-world problem.

Traditional 8mm square spindle shafts (often 65 mm or longer) can be restrictive or require manual trimming during installation.

This hassle has now been eliminated by offering a compact shaft that still purpose-fits the industry-standard S Cutout door profile, allowing quick and effortless integration into existing enclosure systems. All Evolution Series swing handles are compatible with a range of cam systems (single- and multi-point) by aligning with preset H-offset dimensions — delivering consistent seal compression, secure latching, and long-term durability.

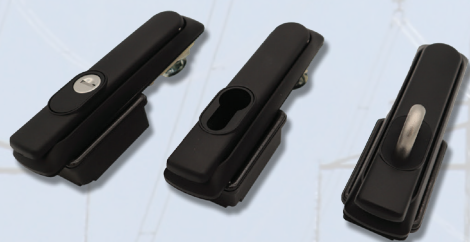
ERGONOMICS AND AESTHETICS:

The Evolution's engineering ensures smooth operation with a satisfying feedback "click" at 90° rotation, confirming full engagement and offers a visually pleasing, low-profile and sleek, vandal-resistant design.

INDUSTRY KEYED BARRELS



PAD-LOCKABLE HASP



EASILY SWITCH UP BETWEEN ...

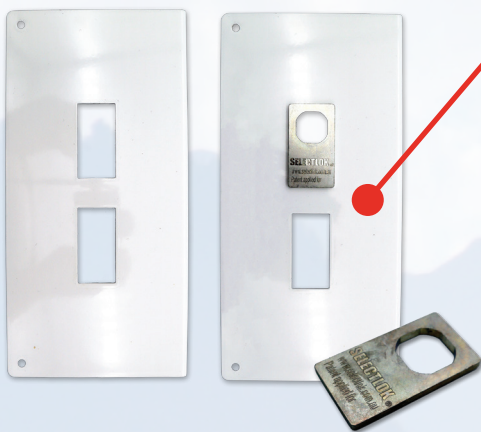
Choose from either Pad-lockable, industry keys (CL001, 92268, CL604, CL003), or half-euro profile inserts (euro cylinders sold separately). Also functions as a non-locking handle when no insert is installed.



HALF-EURO PROFILE

DISCOVER MORE ONLINE
www.selectlok.com.au

Please note: The information contained within this document is correct as of time of publication and is subject to change without warning. Selectlok reserves the right to alter designs, dimensions and technical data w/o notice. ©2025 Selectlok Australia P/L | v2507 | Page 2 of 4

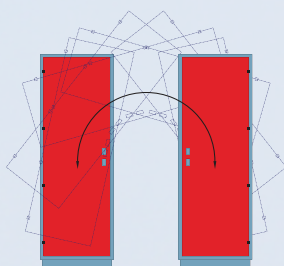


DESIGNED FOR VERSATILITY: S Cutout & F Cutout Compatible

Whether you're working with legacy enclosures or the latest symmetrical frame designs, the Evolution Series adapts seamlessly. With the addition of Selectlok's patented F Cutout Adapter Plate, the handle easily converts between fitting into the Traditional S Cutout profile (used across Millennium, Eselon, and all Evolution Series handles) and the new Symmetrical F Cutout profile — engineered to support our advanced F-Series Symmetrical Door Technology (FSDT) range.

"Enjoy the design flexibility of IND-C door profiles, with the added bonus of reusing your existing handle stock."

PERFECT FOR BIAxIAL SYMMETRICAL DOOR FRAMES



Once installed, the combination of the F Cutout Adapter Plate + Evolution Handle (or any Millennium/Eselon handle) + F Cutout Door Profile enables 180° rotational handle symmetry, allowing same-handle compatibility for both left-hand and right-hand door orientations.



WHATEVER YOUR NEEDS:

Evolution series handles are available in either an IP42 rated - Polyamide (Perfect for indoor or limited exposure environments.) or IP66 rated - Zinc handle version (Built for full outdoor exposure) *Zinc Evolution series swing handles (inc. Switch Up range) are available in both black powder-coated or polished chrome-plated finishes.

ADAPT AND ADJUST IN-SITU:

The Switch Up modular system allows you to adapt and adjust in-situ to meet the changing preferences of your customers or evolving regulatory requirements. You can offer access to many of the industry's most popular locking options — without compromising on affordability or choice.

"Simply Switch Up the INSERT"

HARDWARE THAT SCALES WITH YOUR BUSINESS:

One handle fits many configurations, streamlining production and reducing inventory complexity. - *"A true 1-handle solution"*

INDUSTRY TYPE TESTING AND CERTIFICATION STANDARDS

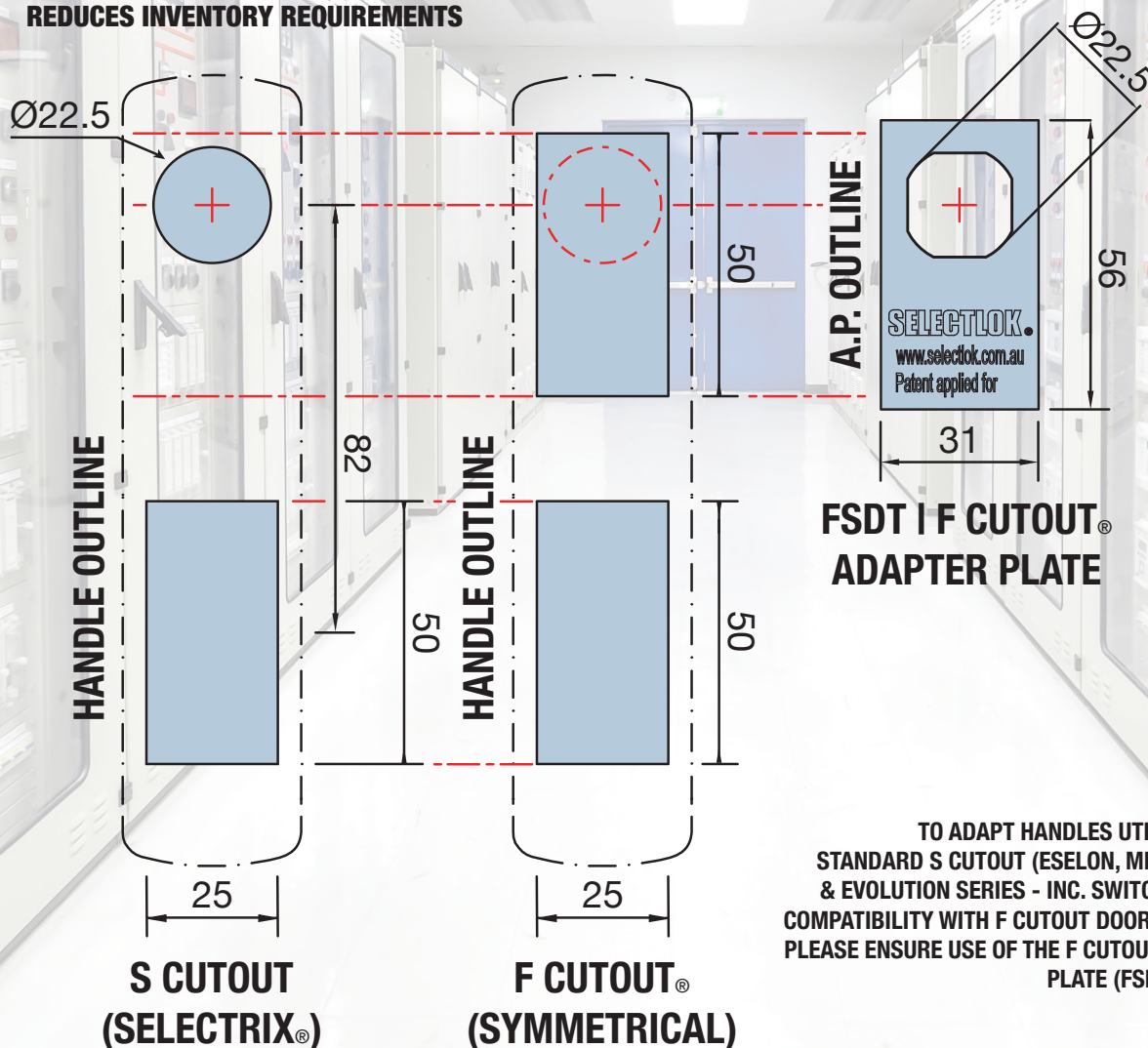
Selectlok's Evolution Series, Switch Up Modular Swing Handles, have undergone type testing and meet current applicable industry certification standards. For detailed test reports, please refer to the *Evolution Series swing handle | FSDT range* products page on our website.



DISCOVER MORE ONLINE
www.selectlok.com.au

Please note: The information contained within this document is correct as of time of publication and is subject to change without warning. Selectlok reserves the right to alter designs, dimensions and technical data w/o notice. ©2025 Selectlok Australia P/L | v2507 | Page 3 of 4

- EASILY SWITCH UP BETWEEN PAD-LOCKABLE, KEYED BARREL OR HALF-EURO INSERTS (HALF-EURO CYLINDER SOLD SEPARATELY) *NON-LOCKING W/O INSERT
- POLYAMIDE: IP42 RATED - INDOOR APPLICATIONS ONLY
- ZINC, BLACK POWDER COAT: IP66 RATED - OUTDOOR/FULL EXPOSURE APPLICATIONS
- ZINC, CHROME PLATED: IP66 RATED - OUTDOOR/FULL EXPOSURE APPLICATIONS
- 90° HANDLE ROTATION FEEDBACK WITH “CLICK”
- SHORT CAM SHAFT DESIGN
- MODULARITY & SYMMETRY - F CUTOUT COMPATIBILITY: PERFECT FOR BIAxIAL SYMMETRICAL DOOR FRAMES USING SELECTLOK'S PATENTED F CUTOUT AND/OR F CUTOUT ADAPTER PLATE (PART OF THE F-SERIES SYMMETRICAL DOOR TECHNOLOGY (FSDT) RANGE.) ENABLING 180° HANDLE ROTATION FOR COMPATIBILITY WITH BOTH LH AND RH SYMMETRICAL / MODULAR DOOR FRAME APPLICATIONS
- VANDAL RESISTANT, FLUSH DESIGN
- REDUCES INVENTORY REQUIREMENTS



TO ADAPT HANDLES UTILISING THE STANDARD S CUTOUT (ESELON, MILLENNIUM, & EVOLUTION SERIES - INC. SWITCH UP). FOR COMPATIBILITY WITH F CUTOUT DOOR PROFILES, PLEASE ENSURE USE OF THE F CUTOUT ADAPTER PLATE (FSDT RANGE).

SELECTLOK AUSTRALIA
+61 (03) 8318 4900
sales@selectlok.com.au
www.selectlok.com.au